

Anti-RASL10A antibody (80-160 Internal) (STJ95542)

STJ95542

GENERAL INFORMATION

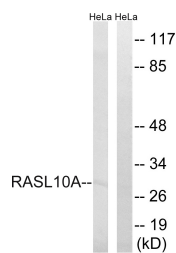
Product Type	Primary antibodies
Short Description	Rabbit polyclonal antibody anti-Ras-Like Protein Family Member 10a (80-160 Internal) is suitable for use in Western Blot and ELISA research applications.
Applications	WB, ELISA
Host/Source	Rabbit
Reactivity	Human, Mouse

PRODUCT PROPERTIES

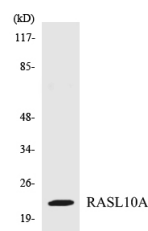
Clonality	Polyclonal
Clone ID	
Concentration	1 mg/mL
Conjugation	Unconjugated
Purification	The antibody was affinity-purified from rabbit anti-serum by affinity-chromatography.
Dilution Range	WB 1:500-1:2000 ELISA 1:40000
Formulation	PBS, 50% Glycerol, 0.5% BSA and 0.02% Sodium Azide.
Isotype	IgG
Storage Instruction	Store at -20°C for up to 1 year from the date of receipt, and avoid repeat freeze-thaw cycles.

TARGET INFORMATION

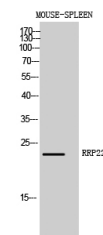
Gene ID	10633
Gene Symbol	RASL10A
Uniprot ID	RSLAA_HUMAN
Immunogen	The antiserum was produced against synthesized peptide derived from human RASL10A at amino acid range 107-156
Immunogen Region	80-160 Internal
Specificity	RASL10A polyclonal antibody (Ras-Like Protein Family Member 10a) binds to endogenous Ras-Like Protein Family Member 10a at the amino acid region 80-160 Internal.
Immunogen Sequence	



Western blot analysis of lysates from HeLa cells, using RASL10A Antibody. The lane on the right is blocked with the synthesized peptide.



Western blot analysis of the lysates from 293 cells using RASL10A antibody.



Western blot analysis of mouse spleen cells using RRP22 Polyclonal Antibody diluted at 1: 1000