

Anti-RREB1 antibody (530-610 Internal) (STJ95540)

STJ95540

GENERAL INFORMATION

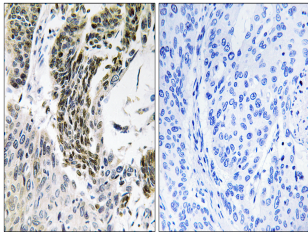
Product Type	Primary antibodies
Short Description	Rabbit polyclonal antibody anti-Ras-Responsive Element-Binding Protein 1 (530-610 Internal) is suitable for use in Western Blot, Immunohistochemistry, Immunofluorescence and ELISA research applications.
Applications	WB, IHC-P, IF-P, ELISA
Host/Source	Rabbit
Reactivity	Human, Mouse

PRODUCT PROPERTIES

Clonality	Polyclonal
Clone ID	
Concentration	1 mg/mL
Conjugation	Unconjugated
Purification	The antibody was affinity-purified from rabbit anti-serum by affinity-chromatography.
Dilution Range	WB 1:500-1:2000 IHC 1:100-1:300 ELISA 1:20000
Formulation	PBS, 50% Glycerol, 0.5% BSA and 0.02% Sodium Azide.
Isotype	IgG
Storage Instruction	Store at -20°C for up to 1 year from the date of receipt, and avoid repeat freeze-thaw cycles.

TARGET INFORMATION

Gene ID	6239
Gene Symbol	RREB1
Uniprot ID	RREB1_HUMAN
Immunogen Region	The antiserum was produced against synthesized peptide derived from human RREB1 at amino acid range 560-609 530-610 Internal
Specificity	RREB1 polyclonal antibody (Ras-Responsive Element-Binding Protein 1) binds to endogenous Ras-Responsive Element-Binding Protein 1 at the amino acid region 530-610 Internal.
Immunogen Sequence	



Immunohistochemistry analysis of paraffin-embedded human lung carcinoma tissue, using RREB1 Antibody. The picture on the right is blocked with the synthesized peptide.