

Anti-POLR2A antibody (1560-1640) (STJ95538)

STJ95538

GENERAL INFORMATION

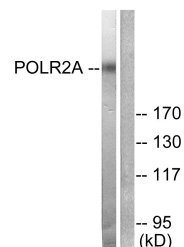
Product Type	Primary antibodies
Short Description	Rabbit polyclonal antibody anti-Dna-Directed Rna Polymerase Ii Subunit Rpb1 (1560-1640) is suitable for use in Western Blot, Immunohistochemistry, Immunofluorescence, Immunocytochemistry and ELISA research applications.
Applications	WB, IHC-P, IF, ICC, ELISA
Host/Source	Rabbit
Reactivity	Human, Mouse, Rat, Monkey

PRODUCT PROPERTIES

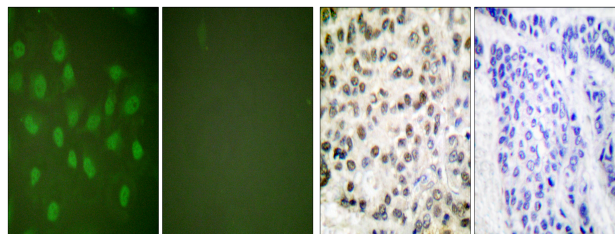
Clonality	Polyclonal
Clone ID	
Concentration	1 mg/mL
Conjugation	Unconjugated
Purification	The antibody was affinity-purified from rabbit anti-serum by affinity-chromatography.
Dilution Range	WB 1:500-1:2000 IHC 1:100-1:300 IF 1:200-1:1000 ELISA 1:10000
Formulation	PBS, 50% Glycerol, 0.5% BSA and 0.02% Sodium Azide.
Isotype	IgG
Storage Instruction	Store at -20°C for up to 1 year from the date of receipt, and avoid repeat freeze-thaw cycles.

TARGET INFORMATION

Gene ID	5430
Gene Symbol	POLR2A
Uniprot ID	RPB1_HUMAN
Immunogen	The antiserum was produced against synthesized peptide derived from human POLR2A at amino acid range 1585-1634
Immunogen Region	1560-1640
Specificity	POLR2A polyclonal antibody (Dna-Directed Rna Polymerase Ii Subunit Rpb1) binds to endogenous Dna-Directed Rna Polymerase Ii Subunit Rpb1 at the amino acid region 1560-1640.
Immunogen Sequence	

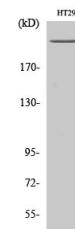


Western blot analysis of lysates from COS7 cells, treated with EGF 200ng/ml 30', using POLR2A Antibody. The lane on the right is blocked with the synthesized peptide.



Immunofluorescence analysis of HeLa cells, using POLR2A Antibody. The picture on the right is blocked with the synthesized peptide.

Immunohistochemistry analysis of paraffin-embedded human breast carcinoma tissue, using POLR2A Antibody. The picture on the right is blocked with the synthesized peptide.



Western blot analysis of various cells using Rpb1 Polyclonal Antibody diluted at 1: 1000 cells nucleus extracted by Minute TM Cytoplasmic and Nuclear Fractionation kit (SC-003, Inventibiotec, MN, USA).

This product is suitable for in-vitro studies under the RESEARCH USE ONLY [RUO] licence. This product must not be used as for diagnostic or other medical purposes.
St John's Laboratory Ltd, Knowledge Dock Business Centre, University Way, London, E16 2RD | Tel: 0208 223 3081