

Anti-RPAP2 antibody (430-510 C-Term) (STJ95537)

STJ95537

GENERAL INFORMATION

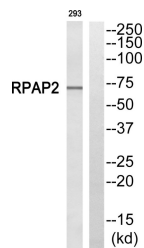
Product Type	Primary antibodies
Short Description	Rabbit polyclonal antibody anti-Putative Rna Polymerase Ii Subunit B1 Ctd Phosphatase Rpap2 (430-510 C-Term) is suitable for use in Western Blot and ELISA research applications.
Applications	WB, ELISA
Host/Source	Rabbit
Reactivity	Human, Rat, Mouse

PRODUCT PROPERTIES

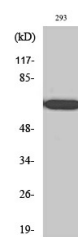
Clonality	Polyclonal
Clone ID	
Concentration	1 mg/mL
Conjugation	Unconjugated
Purification	The antibody was affinity-purified from rabbit anti-serum by affinity-chromatography.
Dilution	WB 1:500-1:2000
Range	ELISA 1:10000
Formulation	PBS, 50% Glycerol, 0.5% BSA and 0.02% Sodium Azide.
Isotype	IgG
Storage	Store at -20°C for up to 1 year from the date of receipt, and avoid repeat freeze-thaw cycles.
Instruction	

TARGET INFORMATION

Gene ID	79871
Gene Symbol	RPAP2
Uniprot ID	RPAP2_HUMAN
Immunogen	The antiserum was produced against synthesized peptide derived from human RPAP2 at amino acid range 460-509
Immunogen Region	430-510 C-Term
Specificity	RPAP2 polyclonal antibody (Putative Rna Polymerase Ii Subunit B1 Ctd Phosphatase Rpap2) binds to endogenous Putative Rna Polymerase Ii Subunit B1 Ctd Phosphatase Rpap2 at the amino acid region 430-510 C-Term.
Immunogen Sequence	



Western blot analysis of RPAP2 Antibody. The lane on the right is blocked with the RPAP2 peptide.



Western blot analysis of various cells using RPAP2 Polyclonal Antibody

This product is suitable for in-vitro studies under the RESEARCH USE ONLY [RUO] licence. This product must not be used as for diagnostic or other medical purposes.
 St John's Laboratory Ltd, Knowledge Dock Business Centre, University Way, London, E16 2RD | Tel: 0208 223 3081