

Anti-POLR1C antibody (70-150 Internal) (STJ95536)

STJ95536

GENERAL INFORMATION

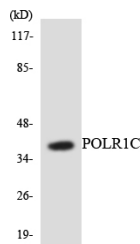
Product Type	Primary antibodies
Short Description	Rabbit polyclonal antibody anti-Dna-Directed Rna Polymerases I And Iii Subunit Rpac1 (70-150 Internal) is suitable for use in Western Blot and ELISA research applications.
Applications	WB, ELISA
Host/Source	Rabbit
Reactivity	Human, Mouse

PRODUCT PROPERTIES

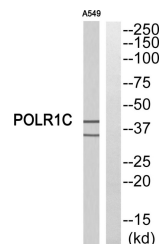
Clonality	Polyclonal
Clone ID	
Concentration	1 mg/mL
Conjugation	Unconjugated
Purification	The antibody was affinity-purified from rabbit anti-serum by affinity-chromatography.
Dilution	WB 1:500-1:2000
Range	ELISA 1:40000
Formulation	PBS, 50% Glycerol, 0.5% BSA and 0.02% Sodium Azide.
Isotype	IgG
Storage	Store at -20°C for up to 1 year from the date of receipt, and avoid repeat freeze-thaw cycles.
Instruction	

TARGET INFORMATION

Gene ID	9533
Gene Symbol	POLR1C
Uniprot ID	RPAC1_HUMAN
Immunogen	The antiserum was produced against synthesized peptide derived from human POLR1C at amino acid range 101-150
Immunogen Region	70-150 Internal
Specificity	POLR1C polyclonal antibody (Dna-Directed Rna Polymerases I And Iii Subunit Rpac1) binds to endogenous Dna-Directed Rna Polymerases I And Iii Subunit Rpac1 at the amino acid region 70-150 Internal.
Immunogen Sequence	



Western blot analysis of the lysates from HepG2 cells using POLR1C antibody.



Western blot analysis of POLR1C Antibody. The lane on the right is blocked with the POLR1C peptide.

This product is suitable for in-vitro studies under the RESEARCH USE ONLY [RUO] licence. This product must not be used as for diagnostic or other medical purposes.
 St John's Laboratory Ltd, Knowledge Dock Business Centre, University Way, London, E16 2RD | Tel: 0208 223 3081