

Anti-ROCK2 antibody (660-740) (STJ95528)

STJ95528

GENERAL INFORMATION

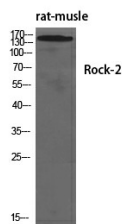
Product Type	Primary antibodies
Short Description	Rabbit polyclonal antibody anti-Rho-Associated Protein Kinase 2 (660-740) is suitable for use in Western Blot and ELISA research applications.
Applications	WB, ELISA
Host/Source	Rabbit
Reactivity	Human, Mouse, Rat, Monkey

PRODUCT PROPERTIES

Clonality	Polyclonal
Clone ID	
Concentration	1 mg/mL
Conjugation	Unconjugated
Purification	The antibody was affinity-purified from rabbit anti-serum by affinity-chromatography.
Dilution Range	WB 1:500-1:2000 ELISA 1:40000
Formulation	PBS, 50% Glycerol, 0.5% BSA and 0.02% Sodium Azide.
Isotype	IgG
Storage	Store at -20°C for up to 1 year from the date of receipt, and avoid repeat freeze-thaw cycles.
Instruction	

TARGET INFORMATION

Gene ID	9475
Gene Symbol	ROCK2
Uniprot ID	ROCK2_HUMAN
Immunogen	The antiserum was produced against synthesized peptide derived from human ROCK2 at amino acid range 691-740
Immunogen Region	660-740
Specificity	ROCK2 polyclonal antibody (Rho-Associated Protein Kinase 2) binds to endogenous Rho-Associated Protein Kinase 2 at the amino acid region 660-740.
Immunogen Sequence	



Western blot analysis of various cells using Rock-2 Polyclonal Antibody diluted at 1: 1000

This product is suitable for in-vitro studies under the RESEARCH USE ONLY [RUO] licence. This product must not be used as for diagnostic or other medical purposes.
St John's Laboratory Ltd, Knowledge Dock Business Centre, University Way, London, E16 2RD | Tel: 0208 223 3081