

Anti-ROBO2 antibody (210-290 Internal) (STJ95525)

STJ95525

GENERAL INFORMATION

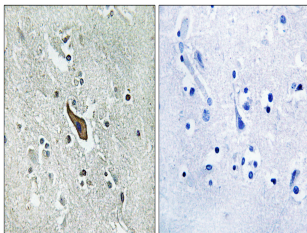
Product Type	Primary antibodies
Short Description	Rabbit polyclonal antibody anti-Roundabout Homolog 2 (210-290 Internal) is suitable for use in Immunohistochemistry, Immunofluorescence and ELISA research applications.
Applications	IHC-P, IF-P, ELISA
Host/Source	Rabbit
Reactivity	Human, Mouse, Rat

PRODUCT PROPERTIES

Clonality	Polyclonal
Clone ID	
Concentration	1 mg/mL
Conjugation	Unconjugated
Purification	The antibody was affinity-purified from rabbit anti-serum by affinity-chromatography.
Dilution Range	IHC 1:100-1:300 ELISA 1:40000
Formulation	PBS, 50% Glycerol, 0.5% BSA and 0.02% Sodium Azide.
Isotype	IgG
Storage	Store at -20°C for up to 1 year from the date of receipt, and avoid repeat freeze-thaw cycles.
Instruction	

TARGET INFORMATION

Gene ID	6092
Gene Symbol	ROBO2
Uniprot ID	ROBO2_HUMAN
Immunogen	The antiserum was produced against synthesized peptide derived from human ROBO2 at amino acid range 237-286
Immunogen Region	210-290 Internal
Specificity	ROBO2 polyclonal antibody (Roundabout Homolog 2) binds to endogenous Roundabout Homolog 2 at the amino acid region 210-290 Internal.
Immunogen Sequence	



Immunohistochemistry analysis of paraffin-embedded human brain tissue, using ROBO2 Antibody. The picture on the right is blocked with the synthesized peptide.