

Anti-USP6NL antibody (420-500 Internal) (STJ95523)

STJ95523

GENERAL INFORMATION

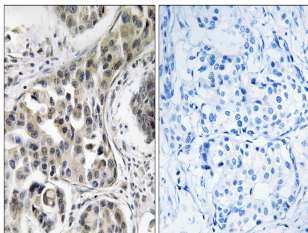
Product Type	Primary antibodies
Short Description	Rabbit polyclonal antibody anti-Usp6 N-Terminal-Like Protein (420-500 Internal) is suitable for use in Immunohistochemistry, Immunofluorescence and ELISA research applications.
Applications	IHC-P, IF-P, ELISA
Host/Source	Rabbit
Reactivity	Human, Rat, Mouse

PRODUCT PROPERTIES

Clonality	Polyclonal
Clone ID	
Concentration	1 mg/mL
Conjugation	Unconjugated
Purification	The antibody was affinity-purified from rabbit anti-serum by affinity-chromatography.
Dilution Range	IHC 1:100-1:300 ELISA 1:10000
Formulation	PBS, 50% Glycerol, 0.5% BSA and 0.02% Sodium Azide.
Isotype	IgG
Storage	Store at -20°C for up to 1 year from the date of receipt, and avoid repeat freeze-thaw cycles.
Instruction	

TARGET INFORMATION

Gene ID	9712
Gene Symbol	USP6NL
Uniprot ID	US6NL_HUMAN
Immunogen	The antiserum was produced against synthesized peptide derived from human USP6NL at amino acid range 451-500
Immunogen Region	420-500 Internal
Specificity	USP6NL polyclonal antibody (Usp6 N-Terminal-Like Protein) binds to endogenous Usp6 N-Terminal-Like Protein at the amino acid region 420-500 Internal.
Immunogen Sequence	



Immunohistochemistry analysis of paraffin-embedded human breast carcinoma, using USP6NL Antibody. The picture on the right is blocked with the synthesized peptide.