

Anti-TRIM38 antibody (130-210 Internal) (STJ95522)

STJ95522

GENERAL INFORMATION

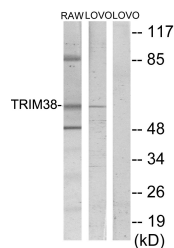
Product Type	Primary antibodies
Short Description	Rabbit polyclonal antibody anti-E3 Ubiquitin-Protein Ligase Trim38 (130-210 Internal) is suitable for use in Western Blot and ELISA research applications.
Applications	WB, ELISA
Host/Source	Rabbit
Reactivity	Human, Mouse

PRODUCT PROPERTIES

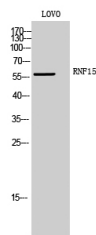
Clonality	Polyclonal
Clone ID	
Concentration	1 mg/mL
Conjugation	Unconjugated
Purification	The antibody was affinity-purified from rabbit anti-serum by affinity-chromatography.
Dilution Range	WB 1:500-1:2000 ELISA 1:40000
Formulation	PBS, 50% Glycerol, 0.5% BSA and 0.02% Sodium Azide.
Isotype	IgG
Storage Instruction	Store at -20°C for up to 1 year from the date of receipt, and avoid repeat freeze-thaw cycles.

TARGET INFORMATION

Gene ID	10475
Gene Symbol	TRIM38
Uniprot ID	TRI38_HUMAN
Immunogen	The antiserum was produced against synthesized peptide derived from human TRIM38 at amino acid range 161-210
Immunogen Region	130-210 Internal
Specificity	TRIM38 polyclonal antibody (E3 Ubiquitin-Protein Ligase Trim38) binds to endogenous E3 Ubiquitin-Protein Ligase Trim38 at the amino acid region 130-210 Internal.
Immunogen Sequence	



Western blot analysis of lysates from LOVO and RAW264.7 cells, using TRIM38 Antibody. The lane on the right is blocked with the synthesized peptide.



Western blot analysis of LOVO cells using RNF15 Polyclonal Antibody