

Anti-ELAC2 antibody (130-210 Internal) (STJ95517)

STJ95517

GENERAL INFORMATION

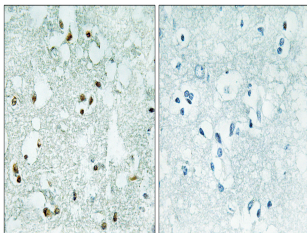
Product Type	Primary antibodies
Short Description	Rabbit polyclonal antibody anti-Zinc Phosphodiesterase Elac Protein 2 (130-210 Internal) is suitable for use in Immunohistochemistry, Immunofluorescence and ELISA research applications.
Applications	IHC-P, IF-P, ELISA
Host/Source	Rabbit
Reactivity	Human, Rat, Mouse

PRODUCT PROPERTIES

Clonality	Polyclonal
Clone ID	
Concentration	1 mg/mL
Conjugation	Unconjugated
Purification	The antibody was affinity-purified from rabbit anti-serum by affinity-chromatography.
Dilution Range	IHC 1:100-1:300 ELISA 1:10000
Formulation	PBS, 50% Glycerol, 0.5% BSA and 0.02% Sodium Azide.
Isotype	IgG
Storage Instruction	Store at -20°C for up to 1 year from the date of receipt, and avoid repeat freeze-thaw cycles.

TARGET INFORMATION

Gene ID	60528
Gene Symbol	ELAC2
Uniprot ID	RN22_HUMAN
Immunogen	The antiserum was produced against synthesized peptide derived from human ELAC2 at amino acid range 161-210
Immunogen Region	130-210 Internal
Specificity	ELAC2 polyclonal antibody (Zinc Phosphodiesterase Elac Protein 2) binds to endogenous Zinc Phosphodiesterase Elac Protein 2 at the amino acid region 130-210 Internal.
Immunogen Sequence	



Immunohistochemistry analysis of paraffin-embedded human brain, using ELAC2 Antibody. The picture on the right is blocked with the synthesized peptide.