

Anti-URI1 antibody (390-470 C-Term) (STJ95516)

STJ95516

GENERAL INFORMATION

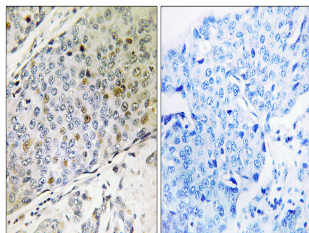
Product Type	Primary antibodies
Short Description	Rabbit polyclonal antibody anti-Unconventional Prefoldin Rpb5 Interactor 1 (390-470 C-Term) is suitable for use in Western Blot, Immunohistochemistry, Immunofluorescence and ELISA research applications.
Applications	WB, IHC-P, IF-P, ELISA
Host/Source	Rabbit
Reactivity	Human, Rat, Mouse

PRODUCT PROPERTIES

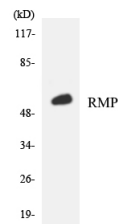
Clonality	Polyclonal
Clone ID	
Concentration	1 mg/mL
Conjugation	Unconjugated
Purification	The antibody was affinity-purified from rabbit anti-serum by affinity-chromatography.
Dilution Range	WB 1:500-1:2000 IHC 1:100-1:300 ELISA 1:40000
Formulation	PBS, 50% Glycerol, 0.5% BSA and 0.02% Sodium Azide.
Isotype	IgG
Storage Instruction	Store at -20°C for up to 1 year from the date of receipt, and avoid repeat freeze-thaw cycles.

TARGET INFORMATION

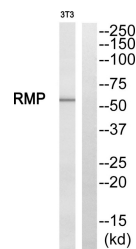
Gene ID	8725
Gene Symbol	URI1
Uniprot ID	RMP_HUMAN
Immunogen	The antiserum was produced against synthesized peptide derived from human RMP at amino acid range 415-464
Immunogen Region	390-470 C-Term
Specificity	URI1 polyclonal antibody (Unconventional Prefoldin Rpb5 Interactor 1) binds to endogenous Unconventional Prefoldin Rpb5 Interactor 1 at the amino acid region 390-470 C-Term.
Immunogen Sequence	



Immunohistochemistry analysis of paraffin-embedded human breast carcinoma, using RMP Antibody. The lane on the right is blocked with the RMP peptide.



Western blot analysis of the lysates from K562 cells using RMP antibody.



Western blot analysis of RMP Antibody. The lane on the right is blocked with the RMP peptide.

This product is suitable for in-vitro studies under the RESEARCH USE ONLY [RUO] licence. This product must not be used as for diagnostic or other medical purposes.
St John's Laboratory Ltd, Knowledge Dock Business Centre, University Way, London, E16 2RD | Tel: 0208 223 3081