

Anti-PEBP1 antibody (80-160 Internal) (STJ95515)

STJ95515

GENERAL INFORMATION

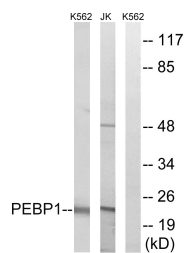
Product Type	Primary antibodies
Short Description	Rabbit polyclonal antibody anti-Phosphatidylethanolamine-Binding Protein 1 (80-160 Internal) is suitable for use in Western Blot, Immunohistochemistry, Immunofluorescence and ELISA research applications.
Applications	WB, IHC-P, IF-P, ELISA
Host/Source	Rabbit
Reactivity	Human, Rat, Mouse

PRODUCT PROPERTIES

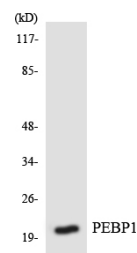
Clonality	Polyclonal
Clone ID	
Concentration	1 mg/mL
Conjugation	Unconjugated
Purification	The antibody was affinity-purified from rabbit anti-serum by affinity-chromatography.
Dilution	WB 1:500-1:2000
Range	ELISA 1:5000
Formulation	PBS, 50% Glycerol, 0.5% BSA and 0.02% Sodium Azide.
Isotype	IgG
Storage	Store at -20°C for up to 1 year from the date of receipt, and avoid repeat freeze-thaw cycles.
Instruction	

TARGET INFORMATION

Gene ID	5037
Gene Symbol	PEBP1
Uniprot ID	PEBP1_HUMAN
Immunogen	The antiserum was produced against synthesized peptide derived from human PEBP1 at amino acid range 105-154
Immunogen Region	80-160 Internal
Specificity	PEBP1 polyclonal antibody (Phosphatidylethanolamine-Binding Protein 1) binds to endogenous Phosphatidylethanolamine-Binding Protein 1 at the amino acid region 80-160 Internal.
Immunogen Sequence	



Western blot analysis of lysates from Jurkat and K562 cells, using PEBP1 Antibody. The lane on the right is blocked with the synthesized peptide.



Western blot analysis of the lysates from HepG2 cells using PEBP1 antibody.



Western blot analysis of various cells using RKIP Polyclonal Antibody.