

## Anti-RIT1 antibody (140-220 C-Term) (STJ95514)

STJ95514

### GENERAL INFORMATION

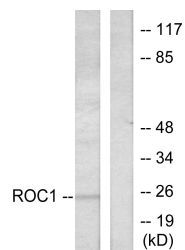
<b>Product Type</b>	Primary antibodies
<b>Short Description</b>	Rabbit polyclonal antibody anti-Gtp-Binding Protein Rit1 (140-220 C-Term) is suitable for use in Western Blot and ELISA research applications.
<b>Applications</b>	WB, ELISA
<b>Host/Source</b>	Rabbit
<b>Reactivity</b>	Human, Mouse

### PRODUCT PROPERTIES

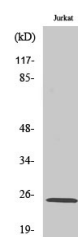
<b>Clonality</b>	Polyclonal
<b>Clone ID</b>	
<b>Concentration</b>	1 mg/mL
<b>Conjugation</b>	Unconjugated
<b>Purification</b>	The antibody was affinity-purified from rabbit anti-serum by affinity-chromatography.
<b>Dilution Range</b>	WB 1:500-1:2000 ELISA 1:10000
<b>Formulation</b>	PBS, 50% Glycerol, 0.5% BSA and 0.02% Sodium Azide.
<b>Isotype</b>	IgG
<b>Storage Instruction</b>	Store at -20°C for up to 1 year from the date of receipt, and avoid repeat freeze-thaw cycles.

### TARGET INFORMATION

<b>Gene ID</b>	6016
<b>Gene Symbol</b>	RIT1
<b>Uniprot ID</b>	RIT1_HUMAN
<b>Immunogen</b>	The antiserum was produced against synthesized peptide derived from human RIT1 at amino acid range 170-219
<b>Immunogen Region</b>	140-220 C-Term
<b>Specificity</b>	RIT1 polyclonal antibody (Gtp-Binding Protein Rit1) binds to endogenous Gtp-Binding Protein Rit1 at the amino acid region 140-220 C-Term.
<b>Immunogen Sequence</b>	



Western blot analysis of lysates from Jurkat cells, using RIT1 Antibody. The lane on the right is blocked with the synthesized peptide.



Western blot analysis of various cells using RIT1 Polyclonal Antibody diluted at 1: 500

This product is suitable for in-vitro studies under the RESEARCH USE ONLY [RUO] licence. This product must not be used as for diagnostic or other medical purposes.  
St John's Laboratory Ltd, Knowledge Dock Business Centre, University Way, London, E16 2RD | Tel: 0208 223 3081