

Anti-RIPK2 antibody (120-200) (STJ95512)

STJ95512

GENERAL INFORMATION

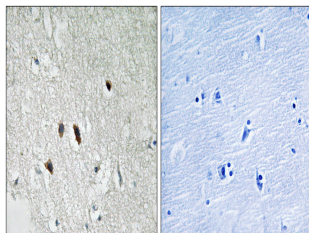
Product Type	Primary antibodies
Short Description	Rabbit polyclonal antibody anti-Receptor-Interacting Serine/Threonine-Protein Kinase 2 (120-200) is suitable for use in Western Blot, Immunohistochemistry, Immunofluorescence and ELISA research applications.
Applications	WB, IHC-P, IF-P, ELISA
Host/Source	Rabbit
Reactivity	Human, Mouse

PRODUCT PROPERTIES

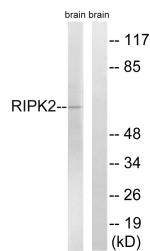
Clonality	Polyclonal
Clone ID	
Concentration	1 mg/mL
Conjugation	Unconjugated
Purification	The antibody was affinity-purified from rabbit anti-serum by affinity-chromatography.
Dilution Range	WB 1:500-1:2000 IHC 1:100-1:300 ELISA 1:40000
Formulation	PBS, 50% Glycerol, 0.5% BSA and 0.02% Sodium Azide.
Isotype	IgG
Storage Instruction	Store at -20°C for up to 1 year from the date of receipt, and avoid repeat freeze-thaw cycles.

TARGET INFORMATION

Gene ID	8767
Gene Symbol	RIPK2
Uniprot ID	RIPK2_HUMAN
Immunogen Region	The antiserum was produced against synthesized peptide derived from human RIPK2 at amino acid range 146-195
Immunogen Region	120-200
Specificity	RIPK2 polyclonal antibody (Receptor-Interacting Serine/Threonine-Protein Kinase 2) binds to endogenous Receptor-Interacting Serine/Threonine-Protein Kinase 2 at the amino acid region 120-200.
Immunogen Sequence	



Immunohistochemistry analysis of paraffin-embedded human brain tissue, using RIPK2 Antibody. The picture on the right is blocked with the synthesized peptide.



Western blot analysis of lysates from rat brain cells, using RIPK2 Antibody. The lane on the right is blocked with the synthesized peptide.



Western blot analysis of 3T3 lysis using RIPK2 antibody. Antibody was diluted at 1:500

This product is suitable for in-vitro studies under the RESEARCH USE ONLY [RUO] licence. This product must not be used as for diagnostic or other medical purposes.
St John's Laboratory Ltd, Knowledge Dock Business Centre, University Way, London, E16 2RD | Tel: 0208 223 3081