

Anti-RIN3 antibody (360-440 Internal) (STJ95510)

STJ95510

GENERAL INFORMATION

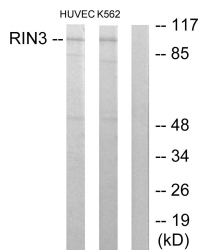
Product Type	Primary antibodies
Short Description	Rabbit polyclonal antibody anti-Ras And Rab Interactor 3 (360-440 Internal) is suitable for use in Western Blot and ELISA research applications.
Applications	WB, ELISA
Host/Source	Rabbit
Reactivity	Human, Rat, Mouse

PRODUCT PROPERTIES

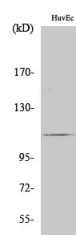
Clonality	Polyclonal
Clone ID	
Concentration	1 mg/mL
Conjugation	Unconjugated
Purification	The antibody was affinity-purified from rabbit anti-serum by affinity-chromatography.
Dilution Range	WB 1:500-1:2000 ELISA 1:10000
Formulation	PBS, 50% Glycerol, 0.5% BSA and 0.02% Sodium Azide.
Isotype	IgG
Storage Instruction	Store at -20°C for up to 1 year from the date of receipt, and avoid repeat freeze-thaw cycles.

TARGET INFORMATION

Gene ID	79890
Gene Symbol	RIN3
Uniprot ID	RIN3_HUMAN
Immunogen	The antiserum was produced against synthesized peptide derived from human RIN3 at amino acid range 391-440
Immunogen Region	360-440 Internal
Specificity	RIN3 polyclonal antibody (Ras And Rab Interactor 3) binds to endogenous Ras And Rab Interactor 3 at the amino acid region 360-440 Internal.
Immunogen Sequence	



Western blot analysis of lysates from HUVEC and K562 cells, using RIN3 Antibody. The lane on the right is blocked with the synthesized peptide.



Western blot analysis of various cells using RIN3 Polyclonal Antibody

This product is suitable for in-vitro studies under the RESEARCH USE ONLY [RUO] licence. This product must not be used as for diagnostic or other medical purposes.
St John's Laboratory Ltd, Knowledge Dock Business Centre, University Way, London, E16 2RD | Tel: 0208 223 3081