

## Anti-RIMS4 antibody (10-90 Internal) (STJ95508)

STJ95508

### GENERAL INFORMATION

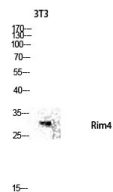
<b>Product Type</b>	Primary antibodies
<b>Short Description</b>	Rabbit polyclonal antibody anti-Regulating Synaptic Membrane Exocytosis Protein 4 (10-90 Internal) is suitable for use in Western Blot, Immunohistochemistry, Immunofluorescence and ELISA research applications.
<b>Applications</b>	WB, IHC-P, IF-P, ELISA
<b>Host/Source</b>	Rabbit
<b>Reactivity</b>	Human, Mouse, Rat

### PRODUCT PROPERTIES

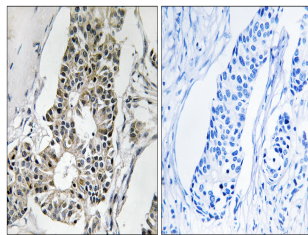
<b>Clonality</b>	Polyclonal
<b>Clone ID</b>	
<b>Concentration</b>	1 mg/mL
<b>Conjugation</b>	Unconjugated
<b>Purification</b>	The antibody was affinity-purified from rabbit anti-serum by affinity-chromatography.
<b>Dilution Range</b>	WB 1:500-1:2000 IHC 1:100-1:300 ELISA 1:20000
<b>Formulation</b>	PBS, 50% Glycerol, 0.5% BSA and 0.02% Sodium Azide.
<b>Isotype</b>	IgG
<b>Storage Instruction</b>	Store at -20°C for up to 1 year from the date of receipt, and avoid repeat freeze-thaw cycles.

### TARGET INFORMATION

<b>Gene ID</b>	140730
<b>Gene Symbol</b>	RIMS4
<b>Uniprot ID</b>	RIMS4_HUMAN
<b>Immunogen</b>	The antiserum was produced against synthesized peptide derived from human RIMS4 at amino acid range 33-82
<b>Immunogen Region</b>	10-90 Internal
<b>Specificity</b>	RIMS4 polyclonal antibody (Regulating Synaptic Membrane Exocytosis Protein 4) binds to endogenous Regulating Synaptic Membrane Exocytosis Protein 4 at the amino acid region 10-90 Internal.
<b>Immunogen Sequence</b>	



Western blot analysis of 3T3 lysis using Rim4 antibody. Antibody was diluted at 1:500



Immunohistochemistry analysis of paraffin-embedded human breast carcinoma tissue, using RIMS4 Antibody. The picture on the right is blocked with the synthesized peptide.



Western blot analysis of various cells using Rim4 Polyclonal Antibody diluted at 1: 500