

Anti-RPS9 antibody (1-80 Internal) (STJ95507)

STJ95507

GENERAL INFORMATION

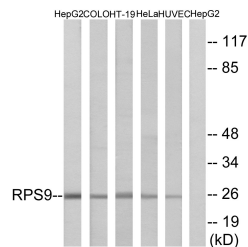
| | |
|--------------------------|--------------------------------------------------------------------------------------------------------------------------------------------------------------------------------------------------------------|
| Product Type | Primary antibodies |
| Short Description | Rabbit polyclonal antibody anti-40s Ribosomal Protein S9 (1-80 Internal) is suitable for use in Western Blot, Immunohistochemistry, Immunofluorescence, Immunocytochemistry and ELISA research applications. |
| Applications | WB, IHC-P, IF, ICC, ELISA |
| Host/Source | Rabbit |
| Reactivity | Human, Mouse, Rat |

PRODUCT PROPERTIES

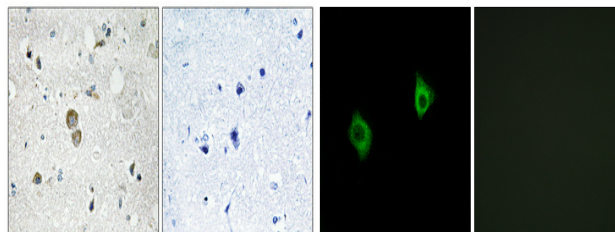
| | |
|----------------------------|------------------------------------------------------------------------------------------------|
| Clonality | Polyclonal |
| Clone ID | |
| Concentration | 1 mg/mL |
| Conjugation | Unconjugated |
| Purification | The antibody was affinity-purified from rabbit anti-serum by affinity-chromatography. |
| Dilution | WB 1:500-1:2000 |
| Range | IHC 1:100-1:300 IF 1:200-1:1000 ELISA 1:20000 |
| Formulation | PBS, 50% Glycerol, 0.5% BSA and 0.02% Sodium Azide. |
| Isotype | IgG |
| Storage Instruction | Store at -20°C for up to 1 year from the date of receipt, and avoid repeat freeze-thaw cycles. |

TARGET INFORMATION

| | |
|---------------------------|------------------------------------------------------------------------------------------------------------------------------------------|
| Gene ID | 6203 |
| Gene Symbol | RPS9 |
| Uniprot ID | RS9_HUMAN |
| Immunogen | The antiserum was produced against synthesized peptide derived from human RPS9 at amino acid range 31-80 |
| Immunogen Region | 1-80 Internal |
| Specificity | RPS9 polyclonal antibody (40s Ribosomal Protein S9) binds to endogenous 40s Ribosomal Protein S9 at the amino acid region 1-80 Internal. |
| Immunogen Sequence | |

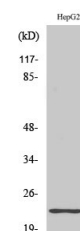


Western blot analysis of lysates from HepG2, COLO, HT-29, HeLa, and HUVEC cells, using RPS9 Antibody. The lane on the right is blocked with the synthesized peptide.



Immunohistochemical analysis of paraffin-embedded Human brain. Antibody was diluted at 1:100 (4°C overnight). High-pressure and temperature Tris-EDTA, pH8.0 was used for antigen retrieval. Negative control (right) obtained from antibody was pre-absorbed by immunogen peptide.

Immunofluorescence analysis of A549 cells, using RPS9 Antibody. The picture on the right is blocked with the synthesized peptide.



Western blot analysis of various cells using Ribosomal Protein S9 Polyclonal Antibody diluted at 1: 500