

Anti-RPS8 antibody (80-160 Internal) (STJ95506)

STJ95506

GENERAL INFORMATION

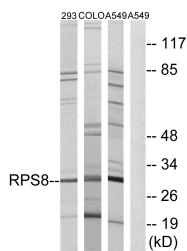
Product Type	Primary antibodies
Short Description	Rabbit polyclonal antibody anti-40s Ribosomal Protein S8 (80-160 Internal) is suitable for use in Western Blot, Immunohistochemistry, Immunofluorescence and ELISA research applications.
Applications	WB, IHC-P, IF-P, ELISA
Host/Source	Rabbit
Reactivity	Human, Mouse, Rat

PRODUCT PROPERTIES

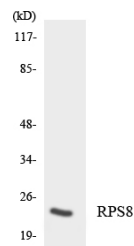
Clonality	Polyclonal
Clone ID	
Concentration	1 mg/mL
Conjugation	Unconjugated
Purification	The antibody was affinity-purified from rabbit anti-serum by affinity-chromatography.
Dilution Range	WB 1:500-1:2000 IHC 1:100-1:300 ELISA 1:20000
Formulation	PBS, 50% Glycerol, 0.5% BSA and 0.02% Sodium Azide.
Isotype	IgG
Storage Instruction	Store at -20°C for up to 1 year from the date of receipt, and avoid repeat freeze-thaw cycles.

TARGET INFORMATION

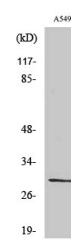
Gene ID	6202
Gene Symbol	RPS8
Uniprot ID	RS8_HUMAN
Immunogen	The antiserum was produced against synthesized peptide derived from human RPS8 at amino acid range 111-160
Immunogen Region	80-160 Internal
Specificity	RPS8 polyclonal antibody (40s Ribosomal Protein S8) binds to endogenous 40s Ribosomal Protein S8 at the amino acid region 80-160 Internal.
Immunogen Sequence	



Western blot analysis of lysates from A549, 293, and COLO cells, using RPS8 Antibody. The lane on the right is blocked with the synthesized peptide.



Western blot analysis of the lysates from Jurkat cells using RPS8 antibody.



Western blot analysis of various cells using Ribosomal Protein S8 Polyclonal Antibody diluted at 1: 2000.

This product is suitable for in-vitro studies under the RESEARCH USE ONLY [RUO] licence. This product must not be used as for diagnostic or other medical purposes.
St John's Laboratory Ltd, Knowledge Dock Business Centre, University Way, London, E16 2RD | Tel: 0208 223 3081