

Anti-RPS5 antibody (60-140 Internal) (STJ95502)

STJ95502

GENERAL INFORMATION

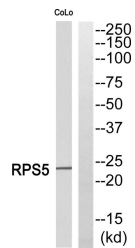
Product Type	Primary antibodies
Short Description	Rabbit polyclonal antibody anti-40s Ribosomal Protein S5 (60-140 Internal) is suitable for use in Western Blot and ELISA research applications.
Applications	WB, ELISA
Host/Source	Rabbit
Reactivity	Human, Mouse, Rat

PRODUCT PROPERTIES

Clonality	Polyclonal
Clone ID	
Concentration	1 mg/mL
Conjugation	Unconjugated
Purification	The antibody was affinity-purified from rabbit anti-serum by affinity-chromatography.
Dilution Range	WB 1:500-1:2000 ELISA 1:5000
Formulation	PBS, 50% Glycerol, 0.5% BSA and 0.02% Sodium Azide.
Isotype	IgG
Storage Instruction	Store at -20°C for up to 1 year from the date of receipt, and avoid repeat freeze-thaw cycles.

TARGET INFORMATION

Gene ID	6193
Gene Symbol	RPS5
Uniprot ID	R5S_HUMAN
Immunogen	Synthesized peptide derived from Ribosomal Protein S5. at amino acid range: 60-140
Immunogen Region	60-140 Internal
Specificity	RPS5 polyclonal antibody (40s Ribosomal Protein S5) binds to endogenous 40s Ribosomal Protein S5 at the amino acid region 60-140 Internal.
Immunogen Sequence	



Western blot analysis of RPS5 Antibody. The lane on the right is blocked with the RPS5 peptide.

This product is suitable for in-vitro studies under the RESEARCH USE ONLY [RUO] licence. This product must not be used as for diagnostic or other medical purposes.
St John's Laboratory Ltd, Knowledge Dock Business Centre, University Way, London, E16 2RD | Tel: 0208 223 3081