

Anti-RPS11 antibody (40-120 Internal) (STJ95486)

STJ95486

GENERAL INFORMATION

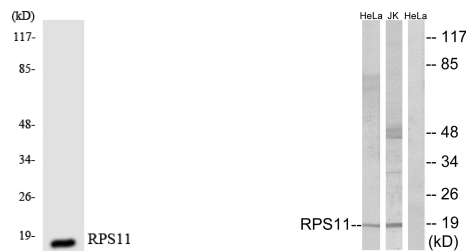
Product Type	Primary antibodies
Short Description	Rabbit polyclonal antibody anti-40s Ribosomal Protein S11 (40-120 Internal) is suitable for use in Western Blot, Immunohistochemistry, Immunofluorescence and ELISA research applications.
Applications	WB, IHC-P, IF-P, ELISA
Host/Source	Rabbit
Reactivity	Human, Mouse, Rat

PRODUCT PROPERTIES

Clonality	Polyclonal
Clone ID	
Concentration	1 mg/mL
Conjugation	Unconjugated
Purification	The antibody was affinity-purified from rabbit anti-serum by affinity-chromatography.
Dilution Range	WB 1:500-1:2000 IHC 1:100-1:300 ELISA 1:40000
Formulation	PBS, 50% Glycerol, 0.5% BSA and 0.02% Sodium Azide.
Isotype	IgG
Storage Instruction	Store at -20°C for up to 1 year from the date of receipt, and avoid repeat freeze-thaw cycles.

TARGET INFORMATION

Gene ID	6205
Gene Symbol	RPS11
Uniprot ID	RS11_HUMAN
Immunogen	The antiserum was produced against synthesized peptide derived from human RPS11 at amino acid range 71-120
Immunogen Region	40-120 Internal
Specificity	RPS11 polyclonal antibody (40s Ribosomal Protein S11) binds to endogenous 40s Ribosomal Protein S11 at the amino acid region 40-120 Internal.
Immunogen Sequence	



Western blot analysis of the lysates from HeLa cells using RPS11 antibody.

Western blot analysis of lysates from HeLa and Jurkat cells, using RPS11 Antibody. The lane on the right is blocked with the synthesized peptide.