

Anti-RPLP2 antibody (40-120 Internal) (STJ95485)

STJ95485

GENERAL INFORMATION

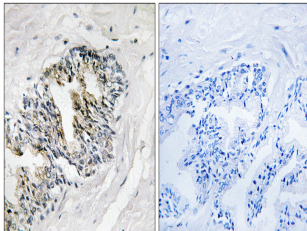
Product Type	Primary antibodies
Short Description	Rabbit polyclonal antibody anti-60s Acidic Ribosomal Protein P2 (40-120 Internal) is suitable for use in Immunohistochemistry, Immunofluorescence and ELISA research applications.
Applications	IHC-P, IF-P, ELISA
Host/Source	Rabbit
Reactivity	Human, Mouse, Rat

PRODUCT PROPERTIES

Clonality	Polyclonal
Clone ID	
Concentration	1 mg/mL
Conjugation	Unconjugated
Purification	The antibody was affinity-purified from rabbit anti-serum by affinity-chromatography.
Dilution Range	IHC 1:100-1:300 ELISA 1:40000
Formulation	PBS, 50% Glycerol, 0.5% BSA and 0.02% Sodium Azide.
Isotype	IgG
Storage	Store at -20°C for up to 1 year from the date of receipt, and avoid repeat freeze-thaw cycles.
Instruction	

TARGET INFORMATION

Gene ID	6181
Gene Symbol	RPLP2
Uniprot ID	RLA2_HUMAN
Immunogen	The antiserum was produced against synthesized peptide derived from human RPLP2 at amino acid range 21-70
Immunogen Region	40-120 Internal
Specificity	RPLP2 polyclonal antibody (60s Acidic Ribosomal Protein P2) binds to endogenous 60s Acidic Ribosomal Protein P2 at the amino acid region 40-120 Internal.
Immunogen Sequence	



Immunohistochemistry analysis of paraffin-embedded human prostate carcinoma tissue, using RPLP2 Antibody. The picture on the right is blocked with the synthesized peptide.