

Anti-RPL3L antibody (180-260 Internal) (STJ95480)

STJ95480

GENERAL INFORMATION

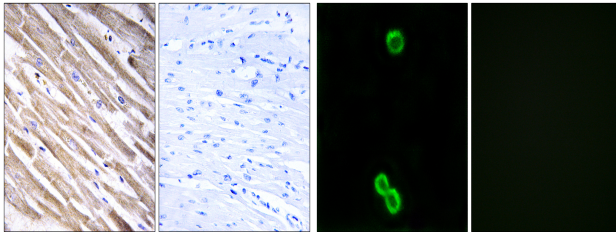
Product Type	Primary antibodies
Short Description	Rabbit polyclonal antibody anti-60s Ribosomal Protein L3-Like (180-260 Internal) is suitable for use in Immunohistochemistry, Immunofluorescence, Immunocytochemistry and ELISA research applications.
Applications	IHC-P, IF, ICC, ELISA
Host/Source	Rabbit
Reactivity	Human, Rat, Mouse

PRODUCT PROPERTIES

Clonality	Polyclonal
Clone ID	
Concentration	1 mg/mL
Conjugation	Unconjugated
Purification	The antibody was affinity-purified from rabbit anti-serum by affinity-chromatography.
Dilution Range	IHC 1:100-1:300 IF 1:200-1:1000 ELISA 1:40000
Formulation	PBS, 50% Glycerol, 0.5% BSA and 0.02% Sodium Azide.
Isotype	IgG
Storage Instruction	Store at -20°C for up to 1 year from the date of receipt, and avoid repeat freeze-thaw cycles.

TARGET INFORMATION

Gene ID	6123
Gene Symbol	RPL3L
Uniprot ID	RL3L_HUMAN
Immunogen	The antiserum was produced against synthesized peptide derived from human RPL3L at amino acid range 211-260
Immunogen Region	180-260 Internal
Specificity	RPL3L polyclonal antibody (60s Ribosomal Protein L3-Like) binds to endogenous 60s Ribosomal Protein L3-Like at the amino acid region 180-260 Internal.
Immunogen Sequence	



Immunohistochemistry analysis of paraffin-embedded human heart tissue, using RPL3L Antibody. The picture on the right is blocked with the synthesized peptide.

Immunofluorescence analysis of MCF7 cells, using RPL3L Antibody. The picture on the right is blocked with the synthesized peptide.

This product is suitable for in-vitro studies under the RESEARCH USE ONLY [RUO] licence. This product must not be used as for diagnostic or other medical purposes.
St John's Laboratory Ltd, Knowledge Dock Business Centre, University Way, London, E16 2RD | Tel: 0208 223 3081