

Anti-RPL34 antibody (10-90 Internal) (STJ95473)

STJ95473

GENERAL INFORMATION

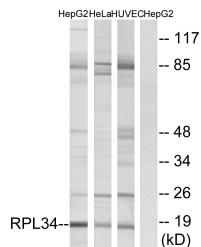
Product Type	Primary antibodies
Short Description	Rabbit polyclonal antibody anti-60s Ribosomal Protein L34 (10-90 Internal) is suitable for use in Western Blot, Immunohistochemistry, Immunofluorescence, Immunocytochemistry and ELISA research applications.
Applications	WB, IHC-P, IF, ICC, ELISA
Host/Source	Rabbit
Reactivity	Human, Mouse, Rat

PRODUCT PROPERTIES

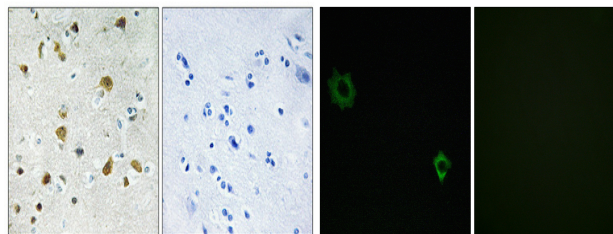
Clonality	Polyclonal
Clone ID	
Concentration	1 mg/mL
Conjugation	Unconjugated
Purification	The antibody was affinity-purified from rabbit anti-serum by affinity-chromatography.
Dilution Range	WB 1:500-1:2000 IHC 1:100-1:300 IF 1:200-1:1000 ELISA 1:20000
Formulation	PBS, 50% Glycerol, 0.5% BSA and 0.02% Sodium Azide.
Isotype	IgG
Storage Instruction	Store at -20°C for up to 1 year from the date of receipt, and avoid repeat freeze-thaw cycles.

TARGET INFORMATION

Gene ID	6164
Gene Symbol	RPL34
Uniprot ID	RL34_HUMAN
Immunogen	The antiserum was produced against synthesized peptide derived from human RPL34 at amino acid range 41-90
Immunogen Region	10-90 Internal
Specificity	RPL34 polyclonal antibody (60s Ribosomal Protein L34) binds to endogenous 60s Ribosomal Protein L34 at the amino acid region 10-90 Internal.
Immunogen Sequence	

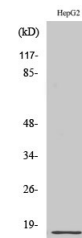


Western blot analysis of lysates from HepG2, HeLa, and HUVEC cells, using RPL34 Antibody. The lane on the right is blocked with the synthesized peptide.



Immunohistochemical analysis of paraffin-embedded Human brain. Antibody was diluted at 1:100 (4°C overnight). High-pressure and temperature Tris-EDTA, pH8.0 was used for antigen retrieval. Negative control (right) obtained from antibody was pre-absorbed by immunogen peptide.

Immunofluorescence analysis of HUVEC cells, using RPL34 Antibody. The picture on the right is blocked with the synthesized peptide.



Western blot analysis of various cells using Ribosomal Protein L34 Polyclonal Antibody diluted at 1: 500

This product is suitable for in-vitro studies under the RESEARCH USE ONLY [RUO] licence. This product must not be used as for diagnostic or other medical purposes.
St John's Laboratory Ltd, Knowledge Dock Business Centre, University Way, London, E16 2RD | Tel: 0208 223 3081