

Anti-RPL31 antibody (30-110 Internal) (STJ95472)

STJ95472

GENERAL INFORMATION

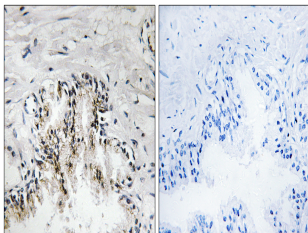
Product Type	Primary antibodies
Short Description	Rabbit polyclonal antibody anti-60s Ribosomal Protein L31 (30-110 Internal) is suitable for use in Western Blot, Immunohistochemistry, Immunofluorescence and ELISA research applications.
Applications	WB, IHC-P, IF-P, ELISA
Host/Source	Rabbit
Reactivity	Human, Mouse, Rat

PRODUCT PROPERTIES

Clonality	Polyclonal
Clone ID	
Concentration	1 mg/mL
Conjugation	Unconjugated
Purification	The antibody was affinity-purified from rabbit anti-serum by affinity-chromatography.
Dilution Range	IHC 1:100-1:300 ELISA 1:40000
Formulation	PBS, 50% Glycerol, 0.5% BSA and 0.02% Sodium Azide.
Isotype	IgG
Storage Instruction	Store at -20°C for up to 1 year from the date of receipt, and avoid repeat freeze-thaw cycles.

TARGET INFORMATION

Gene ID	6160
Gene Symbol	RPL31
Uniprot ID	RL31_HUMAN
Immunogen	The antiserum was produced against synthesized peptide derived from human RPL31 at amino acid range 61-110
Immunogen Region	30-110 Internal
Specificity	RPL31 polyclonal antibody (60s Ribosomal Protein L31) binds to endogenous 60s Ribosomal Protein L31 at the amino acid region 30-110 Internal.
Immunogen Sequence	



Immunohistochemistry analysis of paraffin-embedded human prostate carcinoma tissue, using RPL31 Antibody. The picture on the right is blocked with the synthesized peptide.