

Anti-RPL30 antibody (40-120 C-Term) (STJ95471)

STJ95471

GENERAL INFORMATION

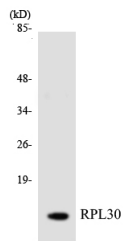
Product Type	Primary antibodies
Short Description	Rabbit polyclonal antibody anti-60s Ribosomal Protein L30 (40-120 C-Term) is suitable for use in Western Blot, Immunohistochemistry, Immunofluorescence and ELISA research applications.
Applications	WB, IHC-P, IF-P, ELISA
Host/Source	Rabbit
Reactivity	Human, Mouse, Rat, Monkey

PRODUCT PROPERTIES

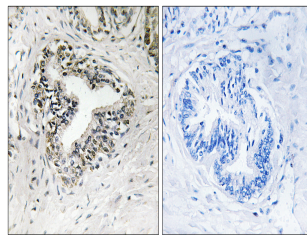
Clonality	Polyclonal
Clone ID	
Concentration	1 mg/mL
Conjugation	Unconjugated
Purification	The antibody was affinity-purified from rabbit anti-serum by affinity-chromatography.
Dilution Range	WB 1:500-1:2000 IHC 1:100-1:300 ELISA 1:40000
Formulation	PBS, 50% Glycerol, 0.5% BSA and 0.02% Sodium Azide.
Isotype	IgG
Storage Instruction	Store at -20°C for up to 1 year from the date of receipt, and avoid repeat freeze-thaw cycles.

TARGET INFORMATION

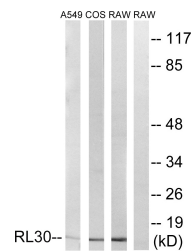
Gene ID	6156
Gene Symbol	RPL30
Uniprot ID	RL30_HUMAN
Immunogen	The antiserum was produced against synthesized peptide derived from human RPL30 at amino acid range 66-115
Immunogen Region	40-120 C-Term
Specificity	RPL30 polyclonal antibody (60s Ribosomal Protein L30) binds to endogenous 60s Ribosomal Protein L30 at the amino acid region 40-120 C-Term.
Immunogen Sequence	



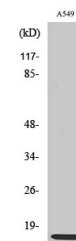
Western blot analysis of the lysates from HT-29 cells using RPL30 antibody.



Immunohistochemistry analysis of paraffin-embedded human prostate carcinoma tissue, using RPL30 Antibody. The picture on the right is blocked with the synthesized peptide.



Western blot analysis of lysates from A549, COS7, and RAW264.7 cells, using RPL30 Antibody. The lane on the right is blocked with the synthesized peptide.



Western blot analysis of various cells using Ribosomal Protein L30 Polyclonal Antibody diluted at 1: 2000