

Anti-RPL3 antibody (180-260 Internal) (STJ95470)

STJ95470

GENERAL INFORMATION

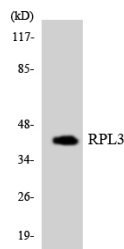
Product Type	Primary antibodies
Short Description	Rabbit polyclonal antibody anti-60s Ribosomal Protein L3 (180-260 Internal) is suitable for use in Western Blot, Immunohistochemistry, Immunofluorescence and ELISA research applications.
Applications	WB, IHC-P, IF-P, ELISA
Host/Source	Rabbit
Reactivity	Human, Mouse, Rat

PRODUCT PROPERTIES

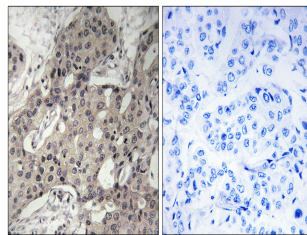
Clonality	Polyclonal
Clone ID	
Concentration	1 mg/mL
Conjugation	Unconjugated
Purification	The antibody was affinity-purified from rabbit anti-serum by affinity-chromatography.
Dilution Range	WB 1:500-1:2000 IHC 1:100-1:300 ELISA 1:20000
Formulation	PBS, 50% Glycerol, 0.5% BSA and 0.02% Sodium Azide.
Isotype	IgG
Storage Instruction	Store at -20°C for up to 1 year from the date of receipt, and avoid repeat freeze-thaw cycles.

TARGET INFORMATION

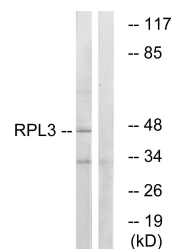
Gene ID	6122
Gene Symbol	RPL3
Uniprot ID	RL3_HUMAN
Immunogen	The antiserum was produced against synthesized peptide derived from human RPL3 at amino acid range 211-260
Immunogen Region	180-260 Internal
Specificity	RPL3 polyclonal antibody (60s Ribosomal Protein L3) binds to endogenous 60s Ribosomal Protein L3 at the amino acid region 180-260 Internal.
Immunogen Sequence	



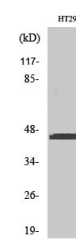
Western blot analysis of the lysates from HUVEC cells using RPL3 antibody.



Immunohistochemistry analysis of paraffin-embedded human breast carcinoma tissue, using RPL3 Antibody. The picture on the right is blocked with the synthesized peptide.



Western blot analysis of lysates from HT-29 cells, using RPL3 Antibody. The lane on the right is blocked with the synthesized peptide.



Western blot analysis of various cells using Ribosomal Protein L3 Polyclonal Antibody