

Anti-RPL18 antibody (80-160 Internal) (STJ95464)

STJ95464

GENERAL INFORMATION

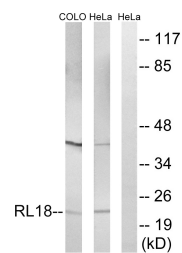
Product Type	Primary antibodies
Short Description	Rabbit polyclonal antibody anti-60s Ribosomal Protein L18 (80-160 Internal) is suitable for use in Western Blot, Immunohistochemistry, Immunofluorescence and ELISA research applications.
Applications	WB, IHC-P, IF-P, ELISA
Host/Source	Rabbit
Reactivity	Human, Mouse, Rat

PRODUCT PROPERTIES

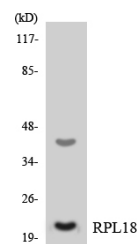
Clonality	Polyclonal
Clone ID	
Concentration	1 mg/mL
Conjugation	Unconjugated
Purification	The antibody was affinity-purified from rabbit anti-serum by affinity-chromatography.
Dilution Range	WB 1:500-1:2000 IHC 1:100-1:300 ELISA 1:40000
Formulation	PBS, 50% Glycerol, 0.5% BSA and 0.02% Sodium Azide.
Isotype	IgG
Storage Instruction	Store at -20°C for up to 1 year from the date of receipt, and avoid repeat freeze-thaw cycles.

TARGET INFORMATION

Gene ID	6141
Gene Symbol	RPL18
Uniprot ID	RL18_HUMAN
Immunogen	The antiserum was produced against synthesized peptide derived from human RPL18 at amino acid range 111-160
Immunogen Region	80-160 Internal
Specificity	RPL18 polyclonal antibody (60s Ribosomal Protein L18) binds to endogenous 60s Ribosomal Protein L18 at the amino acid region 80-160 Internal.
Immunogen Sequence	



Western blot analysis of lysates from HeLa and COLO cells, using RPL18 Antibody. The lane on the right is blocked with the synthesized peptide.



Western blot analysis of the lysates from HeLa cells using RPL18 antibody.



Western blot analysis of various cells using Ribosomal Protein L18 Polyclonal Antibody diluted at 1: 2000.