

Anti-RPL17 antibody (70-150 Internal) (STJ95463)

STJ95463

GENERAL INFORMATION

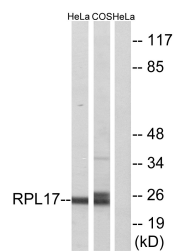
Product Type	Primary antibodies
Short Description	Rabbit polyclonal antibody anti-60s Ribosomal Protein L17 (70-150 Internal) is suitable for use in Western Blot, Immunohistochemistry, Immunofluorescence and ELISA research applications.
Applications	WB, IHC-P, IF-P, ELISA
Host/Source	Rabbit
Reactivity	Human, Mouse, Rat, Monkey

PRODUCT PROPERTIES

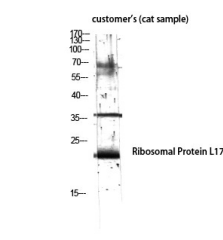
Clonality	Polyclonal
Clone ID	
Concentration	1 mg/mL
Conjugation	Unconjugated
Purification	The antibody was affinity-purified from rabbit anti-serum by affinity-chromatography.
Dilution Range	WB 1:500-1:2000 IHC 1:100-1:300 ELISA 1:10000
Formulation	PBS, 50% Glycerol, 0.5% BSA and 0.02% Sodium Azide.
Isotype	IgG
Storage Instruction	Store at -20°C for up to 1 year from the date of receipt, and avoid repeat freeze-thaw cycles.

TARGET INFORMATION

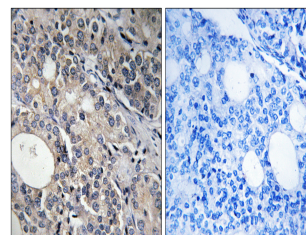
Gene ID	6139
Gene Symbol	RPL17
Uniprot ID	RL17_HUMAN
Immunogen	The antiserum was produced against synthesized peptide derived from human RPL17 at amino acid range 101-150
Immunogen Region	70-150 Internal
Specificity	RPL17 polyclonal antibody (60s Ribosomal Protein L17) binds to endogenous 60s Ribosomal Protein L17 at the amino acid region 70-150 Internal.
Immunogen Sequence	



Western blot analysis of lysates from HeLa and COS7 cells, using RPL17 Antibody. The lane on the right is blocked with the synthesized peptide.



Western blot analysis of customer's (cat sample) using Ribosomal Protein L17 Polyclonal Antibody diluted at 1: 2000



Immunohistochemistry analysis of paraffin-embedded human prostate carcinoma tissue, using RPL17 Antibody. The picture on the right is blocked with the synthesized peptide.



Western blot analysis of various cells using Ribosomal Protein L17 Polyclonal Antibody diluted at 1: 2000