

Anti-RPL10L antibody (120-200 C-Term) (STJ95458)

STJ95458

GENERAL INFORMATION

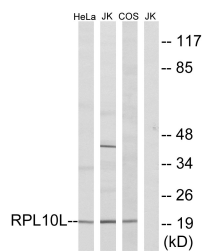
Product Type	Primary antibodies
Short Description	Rabbit polyclonal antibody anti-60s Ribosomal Protein L10-Like (120-200 C-Term) is suitable for use in Western Blot, Immunohistochemistry, Immunofluorescence and ELISA research applications.
Applications	WB, IHC-P, IF-P, ELISA
Host/Source	Rabbit
Reactivity	Human, Monkey

PRODUCT PROPERTIES

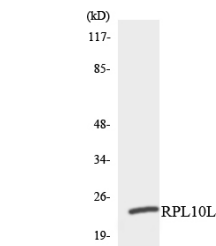
Clonality	Polyclonal
Clone ID	
Concentration	1 mg/mL
Conjugation	Unconjugated
Purification	The antibody was affinity-purified from rabbit anti-serum by affinity-chromatography.
Dilution Range	WB 1:500-1:2000 IHC 1:100-1:300 ELISA 1:10000
Formulation	PBS, 50% Glycerol, 0.5% BSA and 0.02% Sodium Azide.
Isotype	IgG
Storage Instruction	Store at -20°C for up to 1 year from the date of receipt, and avoid repeat freeze-thaw cycles.

TARGET INFORMATION

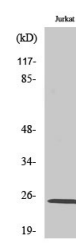
Gene ID	140801
Gene Symbol	RPL10L
Uniprot ID	RL10L_HUMAN
Immunogen	The antiserum was produced against synthesized peptide derived from human RPL10L at amino acid range 151-200
Immunogen Region	120-200 C-Term
Specificity	RPL10L polyclonal antibody (60s Ribosomal Protein L10-Like) binds to endogenous 60s Ribosomal Protein L10-Like at the amino acid region 120-200 C-Term.
Immunogen Sequence	



Western blot analysis of lysates from Jurkat, COS7, and HeLa cells, using RPL10L Antibody. The lane on the right is blocked with the synthesized peptide.



Western blot analysis of the lysates from HUVEC cells using RPL10L antibody.



Western blot analysis of various cells using Ribosomal Protein L10L Polyclonal Antibody diluted at 1:1000.

This product is suitable for in-vitro studies under the RESEARCH USE ONLY [RUO] licence. This product must not be used as for diagnostic or other medical purposes.
St John's Laboratory Ltd, Knowledge Dock Business Centre, University Way, London, E16 2RD | Tel: 0208 223 3081