

Anti-RHPN1 antibody (450-530 Internal) (STJ95454)

STJ95454

GENERAL INFORMATION

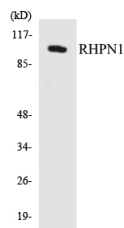
Product Type	Primary antibodies
Short Description	Rabbit polyclonal antibody anti-Rhophilin-1 (450-530 Internal) is suitable for use in Western Blot and ELISA research applications.
Applications	WB, ELISA
Host/Source	Rabbit
Reactivity	Human, Rat, Mouse

PRODUCT PROPERTIES

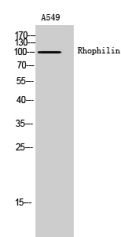
Clonality	Polyclonal
Clone ID	
Concentration	1 mg/mL
Conjugation	Unconjugated
Purification	The antibody was affinity-purified from rabbit anti-serum by affinity-chromatography.
Dilution Range	WB 1:500-1:2000 ELISA 1:10000
Formulation	PBS, 50% Glycerol, 0.5% BSA and 0.02% Sodium Azide.
Isotype	IgG
Storage Instruction	Store at -20°C for up to 1 year from the date of receipt, and avoid repeat freeze-thaw cycles.

TARGET INFORMATION

Gene ID	114822
Gene Symbol	RHPN1
Uniprot ID	RHPN1_HUMAN
Immunogen	The antiserum was produced against synthesized peptide derived from human RHPN1 at amino acid range 474-523
Immunogen Region	450-530 Internal
Specificity	RHPN1 polyclonal antibody (Rhophilin-1) binds to endogenous Rhophilin-1 at the amino acid region 450-530 Internal.
Immunogen Sequence	



Western blot analysis of the lysates from HepG2 cells using RHPN1 antibody.



Western blot analysis of A549 cells using Rhophilin Polyclonal Antibody

This product is suitable for in-vitro studies under the RESEARCH USE ONLY [RUO] licence. This product must not be used as for diagnostic or other medical purposes.
St John's Laboratory Ltd, Knowledge Dock Business Centre, University Way, London, E16 2RD | Tel: 0208 223 3081