

Anti-ARHGEF1 antibody (140-220 Internal) (STJ95453)

STJ95453

GENERAL INFORMATION

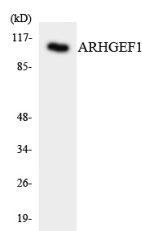
Product Type	Primary antibodies
Short Description	Rabbit polyclonal antibody anti-Rho Guanine Nucleotide Exchange Factor 1 (140-220 Internal) is suitable for use in Western Blot and ELISA research applications.
Applications	WB, ELISA
Host/Source	Rabbit
Reactivity	Human, Mouse, Rat

PRODUCT PROPERTIES

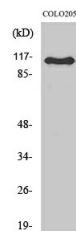
Clonality	Polyclonal
Clone ID	
Concentration	1 mg/mL
Conjugation	Unconjugated
Purification	The antibody was affinity-purified from rabbit anti-serum by affinity-chromatography.
Dilution Range	WB 1:500-1:2000 ELISA 1:40000
Formulation	PBS, 50% Glycerol, 0.5% BSA and 0.02% Sodium Azide.
Isotype	IgG
Storage	Store at -20°C for up to 1 year from the date of receipt, and avoid repeat freeze-thaw cycles.
Instruction	

TARGET INFORMATION

Gene ID	9138
Gene Symbol	ARHGEF1
Uniprot ID	ARHG1_HUMAN
Immunogen	The antiserum was produced against synthesized peptide derived from human ARHGEF1 at amino acid range 162-211
Immunogen Region	140-220 Internal
Specificity	ARHGEF1 polyclonal antibody (Rho Guanine Nucleotide Exchange Factor 1) binds to endogenous Rho Guanine Nucleotide Exchange Factor 1 at the amino acid region 140-220 Internal.
Immunogen Sequence	



Western blot analysis of the lysates from HepG2 cells using ARHGEF1 antibody.



Western blot analysis of various cells using RhoGEF p115 Polyclonal Antibody

This product is suitable for in-vitro studies under the RESEARCH USE ONLY [RUO] licence. This product must not be used as for diagnostic or other medical purposes.
St John's Laboratory Ltd, Knowledge Dock Business Centre, University Way, London, E16 2RD | Tel: 0208 223 3081