

## Anti-RHOBTB3 antibody (310-390 Internal) (STJ95450)

STJ95450

### GENERAL INFORMATION

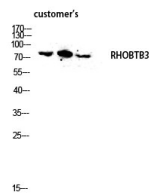
<b>Product Type</b>	Primary antibodies
<b>Short Description</b>	Rabbit polyclonal antibody anti-Rho-Related Btb Domain-Containing Protein 3 (310-390 Internal) is suitable for use in Western Blot, Immunohistochemistry, Immunofluorescence and ELISA research applications.
<b>Applications</b>	WB, IHC-P, IF-P, ELISA
<b>Host/Source</b>	Rabbit
<b>Reactivity</b>	Human, Mouse

### PRODUCT PROPERTIES

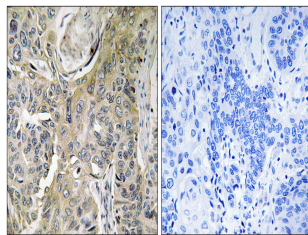
<b>Clonality</b>	Polyclonal
<b>Clone ID</b>	
<b>Concentration</b>	1 mg/mL
<b>Conjugation</b>	Unconjugated
<b>Purification</b>	The antibody was affinity-purified from rabbit anti-serum by affinity-chromatography.
<b>Dilution Range</b>	WB 1:500-1:2000 IHC1:50-300 ELISA 1:20000
<b>Formulation</b>	PBS, 50% Glycerol, 0.5% BSA and 0.02% Sodium Azide.
<b>Isotype</b>	IgG
<b>Storage Instruction</b>	Store at -20°C for up to 1 year from the date of receipt, and avoid repeat freeze-thaw cycles.

### TARGET INFORMATION

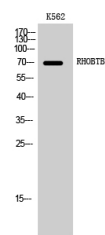
<b>Gene ID</b>	22836
<b>Gene Symbol</b>	RHOBTB3
<b>Uniprot ID</b>	RHBT3_HUMAN
<b>Immunogen</b>	The antiserum was produced against synthesized peptide derived from human RHOBTB3 at amino acid range 335-384
<b>Immunogen Region</b>	310-390 Internal
<b>Specificity</b>	RHOBTB3 polyclonal antibody (Rho-Related Btb Domain-Containing Protein 3) binds to endogenous Rho-Related Btb Domain-Containing Protein 3 at the amino acid region 310-390 Internal.
<b>Immunogen Sequence</b>	



Western blot analysis of customer's lysis using RHOBTB3 antibody. Antibody was diluted at 1:2000



Immunohistochemistry analysis of paraffin-embedded human lung carcinoma tissue, using RHOBTB3 Antibody. The picture on the right is blocked with the synthesized peptide.



Western blot analysis of K562 cells using RHOBTB3 Polyclonal Antibody diluted at 1: 2000