

Anti-RhoBTB1/2 antibody (30-110 N-Term) (STJ95449)

STJ95449

GENERAL INFORMATION

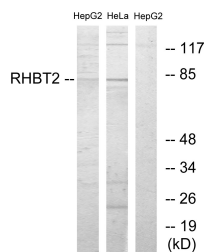
Product Type	Primary antibodies
Short Description	Rabbit polyclonal antibody anti-Rho-related BTB domain-containing protein 1 and Rho-related BTB domain-containing protein 2 (30-110 N-Term) is suitable for use in Western Blot, Immunohistochemistry, Immunofluorescence, Immunocytochemistry and ELISA r
Applications	WB, IHC-P, IF, ICC, ELISA
Host/Source	Rabbit
Reactivity	Human, Mouse

PRODUCT PROPERTIES

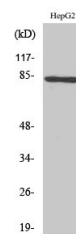
Clonality	Polyclonal
Clone ID	
Concentration	1 mg/mL
Conjugation	Unconjugated
Purification	The antibody was affinity-purified from rabbit anti-serum by affinity-chromatography.
Dilution Range	WB 1:500-1:2000 IHC 1:100-1:300 IF 1:200-1:1000 ELISA 1:5000
Formulation	PBS, 50% Glycerol, 0.5% BSA and 0.02% Sodium Azide.
Isotype	IgG
Storage Instruction	Store at -20°C for up to 1 year from the date of receipt, and avoid repeat freeze-thaw cycles.

TARGET INFORMATION

Gene ID	9886 23221
Gene Symbol	RHOBTB1 RHOBTB2
Uniprot ID	RHBT1_HUMAN RHBT2_HUMAN
Immunogen	The antiserum was produced against synthesized peptide derived from human RHBT2 at amino acid range 61-110
Immunogen Region	30-110 N-Term
Specificity	RhoBTB1/2 polyclonal antibody (Rho-related BTB domain-containing protein 1 and Rho-related BTB domain-containing protein 2) binds to endogenous Rho-related BTB domain-containing protein 1 and Rho-related BTB domain-containing protein 2 at the amino a
Immunogen Sequence	



Western blot analysis of lysates from HepG2 and HeLa cells, using RHBT2 Antibody. The lane on the right is blocked with the synthesized peptide.



Western blot analysis of various cells using RhoBTB1/2 Polyclonal Antibody

This product is suitable for in-vitro studies under the RESEARCH USE ONLY [RUO] licence. This product must not be used as for diagnostic or other medical purposes.
St John's Laboratory Ltd, Knowledge Dock Business Centre, University Way, London, E16 2RD | Tel: 0208 223 3081