

Anti-ARHGDIG antibody (110-190 Internal) (STJ95447)

STJ95447

GENERAL INFORMATION

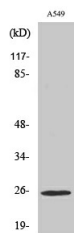
Product Type	Primary antibodies
Short Description	Rabbit polyclonal antibody anti-Rho Gdp-Dissociation Inhibitor 3 (110-190 Internal) is suitable for use in Western Blot and ELISA research applications.
Applications	WB, ELISA
Host/Source	Rabbit
Reactivity	Human, Rat, Mouse

PRODUCT PROPERTIES

Clonality	Polyclonal
Clone ID	
Concentration	1 mg/mL
Conjugation	Unconjugated
Purification	The antibody was affinity-purified from rabbit anti-serum by affinity-chromatography.
Dilution Range	WB 1:500-1:2000 ELISA 1:10000
Formulation	PBS, 50% Glycerol, 0.5% BSA and 0.02% Sodium Azide.
Isotype	IgG
Storage	Store at -20°C for up to 1 year from the date of receipt, and avoid repeat freeze-thaw cycles.
Instruction	

TARGET INFORMATION

Gene ID	398
Gene Symbol	ARHGDIG
Uniprot ID	GDIR3_HUMAN
Immunogen	Synthesized peptide derived from Rho GDI Gamma. at amino acid range: 110-190
Immunogen Region	110-190 Internal
Specificity	ARHGDIG polyclonal antibody (Rho Gdp-Dissociation Inhibitor 3) binds to endogenous Rho Gdp-Dissociation Inhibitor 3 at the amino acid region 110-190 Internal.
Immunogen Sequence	



Western blot analysis of various cells using Rho GDI Gamma Polyclonal Antibody

This product is suitable for in-vitro studies under the RESEARCH USE ONLY [RUO] licence. This product must not be used as for diagnostic or other medical purposes.
St John's Laboratory Ltd, Knowledge Dock Business Centre, University Way, London, E16 2RD | Tel: 0208 223 3081