

Anti-RGS7 antibody (130-210 Internal) (STJ95441)

STJ95441

GENERAL INFORMATION

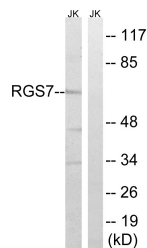
Product Type	Primary antibodies
Short Description	Rabbit polyclonal antibody anti-Regulator Of G-Protein Signaling 7 (130-210 Internal) is suitable for use in Western Blot and ELISA research applications.
Applications	WB, ELISA
Host/Source	Rabbit
Reactivity	Human, Mouse, Rat

PRODUCT PROPERTIES

Clonality	Polyclonal
Clone ID	
Concentration	1 mg/mL
Conjugation	Unconjugated
Purification	The antibody was affinity-purified from rabbit anti-serum by affinity-chromatography.
Dilution Range	WB 1:500-1:2000 ELISA 1:20000
Formulation	PBS, 50% Glycerol, 0.5% BSA and 0.02% Sodium Azide.
Isotype	IgG
Storage	Store at -20°C for up to 1 year from the date of receipt, and avoid repeat freeze-thaw cycles.
Instruction	

TARGET INFORMATION

Gene ID	6000
Gene Symbol	RGS7
Uniprot ID	RGS7_HUMAN
Immunogen	The antiserum was produced against synthesized peptide derived from human RGS7 at amino acid range 155-204
Immunogen Region	130-210 Internal
Specificity	RGS7 polyclonal antibody (Regulator Of G-Protein Signaling 7) binds to endogenous Regulator Of G-Protein Signaling 7 at the amino acid region 130-210 Internal.
Immunogen Sequence	



Western blot analysis of lysates from Jurkat cells, using RGS7 Antibody. The lane on the right is blocked with the synthesized peptide.