

Anti-RGS5 antibody (60-140 Internal) (STJ95440)

STJ95440

GENERAL INFORMATION

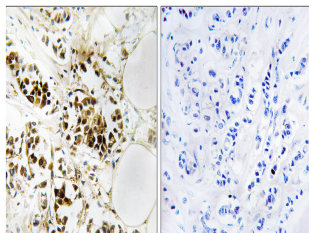
Product Type	Primary antibodies
Short Description	Rabbit polyclonal antibody anti-Regulator Of G-Protein Signaling 5 (60-140 Internal) is suitable for use in Western Blot, Immunohistochemistry, Immunofluorescence and ELISA research applications.
Applications	WB, IHC-P, IF-P, ELISA
Host/Source	Rabbit
Reactivity	Human, Mouse, Rat

PRODUCT PROPERTIES

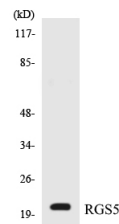
Clonality	Polyclonal
Clone ID	
Concentration	1 mg/mL
Conjugation	Unconjugated
Purification	The antibody was affinity-purified from rabbit anti-serum by affinity-chromatography.
Dilution Range	WB 1:500-1:2000 IHC 1:100-1:300 ELISA 1:20000
Formulation	PBS, 50% Glycerol, 0.5% BSA and 0.02% Sodium Azide.
Isotype	IgG
Storage Instruction	Store at -20°C for up to 1 year from the date of receipt, and avoid repeat freeze-thaw cycles.

TARGET INFORMATION

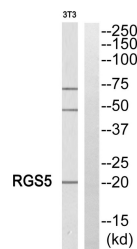
Gene ID	8490
Gene Symbol	RGS5
Uniprot ID	RGS5_HUMAN
Immunogen	The antiserum was produced against synthesized peptide derived from human RGS5 at amino acid range 89-138
Immunogen Region	60-140 Internal
Specificity	RGS5 polyclonal antibody (Regulator Of G-Protein Signaling 5) binds to endogenous Regulator Of G-Protein Signaling 5 at the amino acid region 60-140 Internal.
Immunogen Sequence	



Immunohistochemistry analysis of paraffin-embedded human breast carcinoma, using RGS5 Antibody. The lane on the right is blocked with the RGS5 peptide.



Western blot analysis of the lysates from HepG2 cells using RGS5 antibody.



Western blot analysis of RGS5 Antibody. The lane on the right is blocked with the RGS5 peptide.

This product is suitable for in-vitro studies under the RESEARCH USE ONLY [RUO] licence. This product must not be used as for diagnostic or other medical purposes.
St John's Laboratory Ltd, Knowledge Dock Business Centre, University Way, London, E16 2RD | Tel: 0208 223 3081