

Anti-RGS12 antibody (110-190 N-Term) (STJ95437)

STJ95437

GENERAL INFORMATION

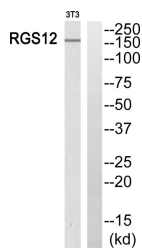
Product Type	Primary antibodies
Short Description	Rabbit polyclonal antibody anti-Regulator Of G-Protein Signaling 12 (110-190 N-Term) is suitable for use in Western Blot and ELISA research applications.
Applications	WB, ELISA
Host/Source	Rabbit
Reactivity	Human, Mouse, Rat

PRODUCT PROPERTIES

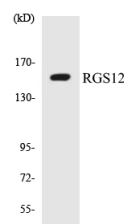
Clonality	Polyclonal
Clone ID	
Concentration	1 mg/mL
Conjugation	Unconjugated
Purification	The antibody was affinity-purified from rabbit anti-serum by affinity-chromatography.
Dilution Range	WB 1:500-1:2000 ELISA 1:40000
Formulation	PBS, 50% Glycerol, 0.5% BSA and 0.02% Sodium Azide.
Isotype	IgG
Storage Instruction	Store at -20°C for up to 1 year from the date of receipt, and avoid repeat freeze-thaw cycles.

TARGET INFORMATION

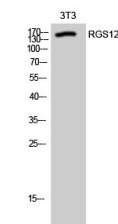
Gene ID	6002
Gene Symbol	RGS12
Uniprot ID	RGS12_HUMAN
Immunogen	The antiserum was produced against synthesized peptide derived from human RGS12 at amino acid range 141-190
Immunogen Region	110-190 N-Term
Specificity	RGS12 polyclonal antibody (Regulator Of G-Protein Signaling 12) binds to endogenous Regulator Of G-Protein Signaling 12 at the amino acid region 110-190 N-Term.
Immunogen Sequence	



Western blot analysis of RGS12 Antibody. The lane on the right is blocked with the RGS12 peptide.



Western blot analysis of the lysates from HUVEC cells using RGS12 antibody.



Western blot analysis of 3T3 cells using RGS12 Polyclonal Antibody cells nucleus extracted by Minute™ Cytoplasmic and Nuclear Fractionation kit (SC-003, Inventibiotech, MN, USA).