

## Anti-RGS10 antibody (50-130 Internal) (STJ95436)

STJ95436

### GENERAL INFORMATION

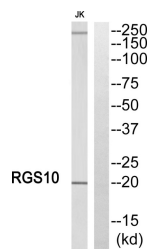
<b>Product Type</b>	Primary antibodies
<b>Short Description</b>	Rabbit polyclonal antibody anti-Regulator Of G-Protein Signaling 10 (50-130 Internal) is suitable for use in Western Blot, Immunohistochemistry, Immunofluorescence and ELISA research applications.
<b>Applications</b>	WB, IHC-P, IF-P, ELISA
<b>Host/Source</b>	Rabbit
<b>Reactivity</b>	Human, Mouse, Rat

### PRODUCT PROPERTIES

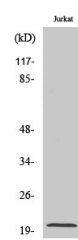
<b>Clonality</b>	Polyclonal
<b>Clone ID</b>	
<b>Concentration</b>	1 mg/mL
<b>Conjugation</b>	Unconjugated
<b>Purification</b>	The antibody was affinity-purified from rabbit anti-serum by affinity-chromatography.
<b>Dilution Range</b>	WB 1:500-1:2000 IHC 1:100-1:300 ELISA 1:10000
<b>Formulation</b>	PBS, 50% Glycerol, 0.5% BSA and 0.02% Sodium Azide.
<b>Isotype</b>	IgG
<b>Storage Instruction</b>	Store at 20°C for up to 1 year from the date of receipt, and avoid repeat freeze-thaw cycles.

### TARGET INFORMATION

<b>Gene ID</b>	6001
<b>Gene Symbol</b>	RGS10
<b>Uniprot ID</b>	RGS10_HUMAN
<b>Immunogen Region</b>	The antiserum was produced against synthesized peptide derived from human RGS10 at amino acid range 80-129
<b>Immunogen Region</b>	50-130 Internal
<b>Specificity</b>	RGS10 polyclonal antibody (Regulator Of G-Protein Signaling 10) binds to endogenous Regulator Of G-Protein Signaling 10 at the amino acid region 50-130 Internal.
<b>Immunogen Sequence</b>	



Western blot analysis of RGS10 Antibody. The lane on the right is blocked with the RGS10 peptide.



Western blot analysis of various cells using RGS10 Polyclonal Antibody

This product is suitable for in-vitro studies under the RESEARCH USE ONLY [RUO] licence. This product must not be used as for diagnostic or other medical purposes.  
St John's Laboratory Ltd, Knowledge Dock Business Centre, University Way, London, E16 2RD | Tel: 0208 223 3081