

Anti-RGPD2/3/4/6/8 antibody (550-630 C-Term) (STJ95433)

STJ95433

GENERAL INFORMATION

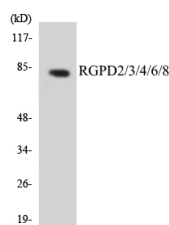
Product Type	Primary antibodies
Short Description	Rabbit polyclonal antibody anti-RANBP2-like and GRIP domain-containing protein 8 and RANBP2-like and GRIP domain-containing protein 5/6 and RanBP2-like and GRIP domain-containing protein 4 and RanBP2-like and GRIP domain-containing protein 3 and OBSO
Applications	WB, ELISA
Host/Source	Rabbit
Reactivity	Human, Rat, Mouse

PRODUCT PROPERTIES

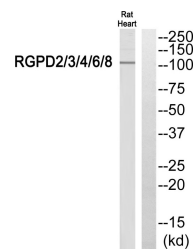
Clonality	Polyclonal
Clone ID	
Concentration	1 mg/mL
Conjugation	Unconjugated
Purification	The antibody was affinity-purified from rabbit anti-serum by affinity-chromatography.
Dilution Range	WB 1:500-1:2000 ELISA 1:40000
Formulation	PBS, 50% Glycerol, 0.5% BSA and 0.02% Sodium Azide.
Isotype	IgG
Storage Instruction	Store at -20°C for up to 1 year from the date of receipt, and avoid repeat freeze-thaw cycles.

TARGET INFORMATION

Gene ID	729540/84220 727851 653489<
Gene Symbol	RGPD5.RGPD6 RGPD8 RGPD5_HUMAN RGPD8_HUMAN RGPD3_HUMAN
Immunogen Region	The antiserum was produced against synthesized peptide derived from human RGPD2/3/4/6/8 at amino acid range 577-626 550-630 C-Term
Specificity	RGPD2/3/4/6/8 polyclonal antibody (RANBP2-like and GRIP domain-containing protein 8 and RANBP2-like and GRIP domain-containing protein 5/6 and RanBP2-like and GRIP domain-containing protein 4 and RanBP2-like and GRIP domain-containing protein 3 and O
Immunogen Sequence	



Western blot analysis of the lysates from Jurkat cells using RGPD2/3/4/6/8 antibody.



Western blot analysis of RGPD2/3/4/6/8 Antibody. The lane on the right is blocked with the RGPD2/3/4/6/8 peptide.

This product is suitable for in-vitro studies under the RESEARCH USE ONLY [RUO] licence. This product must not be used as for diagnostic or other medical purposes.
St John's Laboratory Ltd, Knowledge Dock Business Centre, University Way, London, E16 2RD | Tel: 0208 223 3081