

Anti-RTL9 antibody (1300-1380 C-Term) (STJ95432)

STJ95432

GENERAL INFORMATION

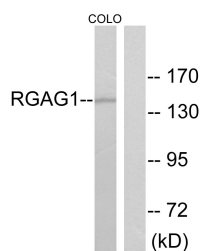
Product Type	Primary antibodies
Short Description	Rabbit polyclonal antibody anti-Retrotransposon Gag-Like Protein 9 (1300-1380 C-Term) is suitable for use in Western Blot and ELISA research applications.
Applications	WB, ELISA
Host/Source	Rabbit
Reactivity	Human, Mouse

PRODUCT PROPERTIES

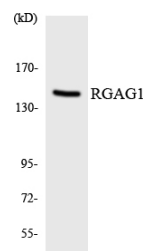
Clonality	Polyclonal
Clone ID	
Concentration	1 mg/mL
Conjugation	Unconjugated
Purification	The antibody was affinity-purified from rabbit anti-serum by affinity-chromatography.
Dilution Range	WB 1:500-1:2000 ELISA 1:40000
Formulation	PBS, 50% Glycerol, 0.5% BSA and 0.02% Sodium Azide.
Isotype	IgG
Storage Instruction	Store at -20°C for up to 1 year from the date of receipt, and avoid repeat freeze-thaw cycles.

TARGET INFORMATION

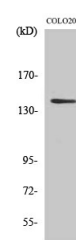
Gene ID	57529
Gene Symbol	RTL9
Uniprot ID	RTL9_HUMAN
Immunogen	The antiserum was produced against synthesized peptide derived from human RGAG1 at amino acid range 1331-1380
Immunogen Region	1300-1380 C-Term
Specificity	RTL9 polyclonal antibody (Retrotransposon Gag-Like Protein 9) binds to endogenous Retrotransposon Gag-Like Protein 9 at the amino acid region 1300-1380 C-Term.
Immunogen Sequence	



Western blot analysis of lysates from COLO cells, using RGAG1 Antibody. The lane on the right is blocked with the synthesized peptide.



Western blot analysis of the lysates from HT-29 cells using RGAG1 antibody.



Western blot analysis of various cells using RGAG1 Polyclonal Antibody