

Anti-RFPL4A antibody (130-210 Internal) (STJ95427)

STJ95427

GENERAL INFORMATION

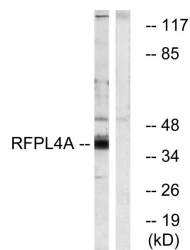
Product Type	Primary antibodies
Short Description	Rabbit polyclonal antibody anti-Ret Finger Protein-Like 4a (130-210 Internal) is suitable for use in Western Blot and ELISA research applications.
Applications	WB, ELISA
Host/Source	Rabbit
Reactivity	Human, Rat, Mouse

PRODUCT PROPERTIES

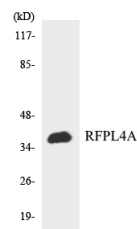
Clonality	Polyclonal
Clone ID	
Concentration	1 mg/mL
Conjugation	Unconjugated
Purification	The antibody was affinity-purified from rabbit anti-serum by affinity-chromatography.
Dilution Range	WB 1:500-1:2000 ELISA 1:5000
Formulation	PBS, 50% Glycerol, 0.5% BSA and 0.02% Sodium Azide.
Isotype	IgG
Storage	Store at -20°C for up to 1 year from the date of receipt, and avoid repeat freeze-thaw cycles.
Instruction	

TARGET INFORMATION

Gene ID	342931
Gene Symbol	RFPL4A
Uniprot ID	RFPLA_HUMAN
Immunogen	The antiserum was produced against synthesized peptide derived from human RFPL4A at amino acid range 155-204
Immunogen Region	130-210 Internal
Specificity	RFPL4A polyclonal antibody (Ret Finger Protein-Like 4a) binds to endogenous Ret Finger Protein-Like 4a at the amino acid region 130-210 Internal.
Immunogen Sequence	



Western blot analysis of lysates from HUVEC cells, using RFPL4A Antibody. The lane on the right is blocked with the synthesized peptide.



Western blot analysis of the lysates from HeLa cells using RFPL4A antibody.



Western blot analysis of various cells using RFPL4A Polyclonal Antibody