

Anti-RET antibody (850-930) (STJ95421)

STJ95421

GENERAL INFORMATION

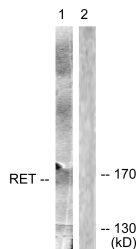
Product Type	Primary antibodies
Short Description	Rabbit polyclonal antibody anti-Proto-Oncogene Tyrosine-Protein Kinase Receptor Ret (850-930) is suitable for use in Western Blot, Immunohistochemistry, Immunofluorescence, Immunocytochemistry and ELISA research applications.
Applications	WB, IHC-P, IF, ICC, ELISA
Host/Source	Rabbit
Reactivity	Human, Mouse, Rat

PRODUCT PROPERTIES

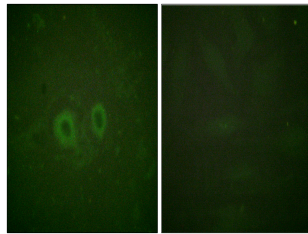
Clonality	Polyclonal
Clone ID	
Concentration	1 mg/mL
Conjugation	Unconjugated
Purification	The antibody was affinity-purified from rabbit anti-serum by affinity-chromatography.
Dilution Range	WB 1:500-1:2000 IHC 1:100-1:300 IF 1:200-1:1000 ELISA 1:20000
Formulation	PBS, 50% Glycerol, 0.5% BSA and 0.02% Sodium Azide.
Isotype	IgG
Storage Instruction	Store at -20°C for up to 1 year from the date of receipt, and avoid repeat freeze-thaw cycles.

TARGET INFORMATION

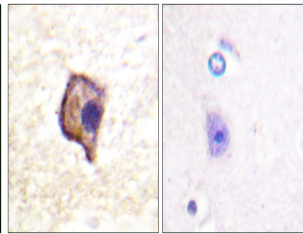
Gene ID	5979
Gene Symbol	RET
Uniprot ID	RET_HUMAN
Immunogen	The antiserum was produced against synthesized peptide derived from human RET at amino acid range 881-930
Immunogen Region	850-930
Specificity	RET polyclonal antibody (Proto-Oncogene Tyrosine-Protein Kinase Receptor Ret) binds to endogenous Proto-Oncogene Tyrosine-Protein Kinase Receptor Ret at the amino acid region 850-930.
Immunogen Sequence	



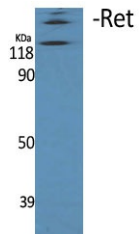
Western blot analysis of lysates from Jurkat cells, using Ret Antibody. The lane on the right is blocked with the synthesized peptide.



Immunofluorescence analysis of HUVEC cells, using Ret Antibody. The picture on the right is blocked with the synthesized peptide.



Immunohistochemistry analysis of paraffin-embedded human brain, using Ret Antibody. The picture on the right is blocked with the synthesized peptide.



Western blot analysis of various cells using Ret Polyclonal Antibody

This product is suitable for in-vitro studies under the RESEARCH USE ONLY [RUO] licence. This product must not be used as for diagnostic or other medical purposes.
St John's Laboratory Ltd, Knowledge Dock Business Centre, University Way, London, E16 2RD | Tel: 0208 223 3081