

Anti-REPS1 antibody (570-650 C-Term) (STJ95419)

STJ95419

GENERAL INFORMATION

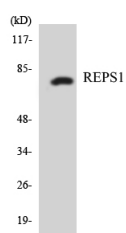
Product Type	Primary antibodies
Short Description	Rabbit polyclonal antibody anti-Ralbp1-Associated Eps Domain-Containing Protein 1 (570-650 C-Term) is suitable for use in Western Blot and ELISA research applications.
Applications	WB, ELISA
Host/Source	Rabbit
Reactivity	Human, Rat, Mouse

PRODUCT PROPERTIES

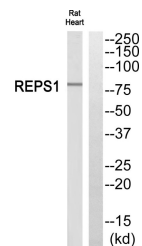
Clonality	Polyclonal
Clone ID	
Concentration	1 mg/mL
Conjugation	Unconjugated
Purification	The antibody was affinity-purified from rabbit anti-serum by affinity-chromatography.
Dilution	WB 1:500-1:2000
Range	ELISA 1:10000
Formulation	PBS, 50% Glycerol, 0.5% BSA and 0.02% Sodium Azide.
Isotype	IgG
Storage	Store at -20°C for up to 1 year from the date of receipt, and avoid repeat freeze-thaw cycles.
Instruction	

TARGET INFORMATION

Gene ID	85021
Gene Symbol	REPS1
Uniprot ID	REPS1_HUMAN
Immunogen	The antiserum was produced against synthesized peptide derived from human REPS1 at amino acid range 597-646
Immunogen Region	570-650 C-Term
Specificity	REPS1 polyclonal antibody (Ralbp1-Associated Eps Domain-Containing Protein 1) binds to endogenous Ralbp1-Associated Eps Domain-Containing Protein 1 at the amino acid region 570-650 C-Term.
Immunogen Sequence	



Western blot analysis of the lysates from K562 cells using REPS1 antibody.



Western blot analysis of REPS1 Antibody. The lane on the right is blocked with the REPS1 peptide.

This product is suitable for in-vitro studies under the RESEARCH USE ONLY [RUO] licence. This product must not be used as for diagnostic or other medical purposes.
 St John's Laboratory Ltd, Knowledge Dock Business Centre, University Way, London, E16 2RD | Tel: 0208 223 3081