

Anti-CDCA2 antibody (480-560 Internal) (STJ95418)

STJ95418

GENERAL INFORMATION

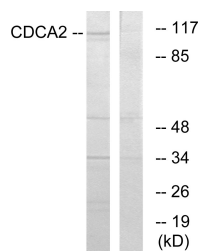
Product Type	Primary antibodies
Short Description	Rabbit polyclonal antibody anti-Cell Division Cycle-Associated Protein 2 (480-560 Internal) is suitable for use in Western Blot, Immunohistochemistry, Immunofluorescence and ELISA research applications.
Applications	WB, IHC-P, IF-P, ELISA
Host/Source	Rabbit
Reactivity	Human, Rat, Mouse

PRODUCT PROPERTIES

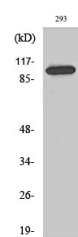
Clonality	Polyclonal
Clone ID	
Concentration	1 mg/mL
Conjugation	Unconjugated
Purification	The antibody was affinity-purified from rabbit anti-serum by affinity-chromatography.
Dilution Range	WB 1:500-1:2000 IHC 1:100-1:300 ELISA 1:5000
Formulation	PBS, 50% Glycerol, 0.5% BSA and 0.02% Sodium Azide.
Isotype	IgG
Storage Instruction	Store at -20°C for up to 1 year from the date of receipt, and avoid repeat freeze-thaw cycles.

TARGET INFORMATION

Gene ID	157313
Gene Symbol	CDCA2
Uniprot ID	CDCA2_HUMAN
Immunogen	The antiserum was produced against synthesized peptide derived from human CDCA2 at amino acid range 511-560
Immunogen Region	480-560 Internal
Specificity	CDCA2 polyclonal antibody (Cell Division Cycle-Associated Protein 2) binds to endogenous Cell Division Cycle-Associated Protein 2 at the amino acid region 480-560 Internal.
Immunogen Sequence	



Western blot analysis of lysates from 293 cells, using CDCA2 Antibody. The lane on the right is blocked with the synthesized peptide.



Western blot analysis of various cells using Repo-Man Polyclonal Antibody diluted at 1:2000 cells nucleus extracted by Minute TM Cytoplasmic and Nuclear Fractionation kit (SC-003, Inventibiotec, MN, USA).

This product is suitable for in-vitro studies under the RESEARCH USE ONLY [RUO] licence. This product must not be used as for diagnostic or other medical purposes.
St John's Laboratory Ltd, Knowledge Dock Business Centre, University Way, London, E16 2RD | Tel: 0208 223 3081