

Anti-RPTN antibody (620-700 C-Term) (STJ95417)

STJ95417

GENERAL INFORMATION

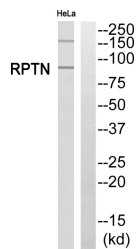
Product Type	Primary antibodies
Short Description	Rabbit polyclonal antibody anti-Repetin (620-700 C-Term) is suitable for use in Western Blot and ELISA research applications.
Applications	WB, ELISA
Host/Source	Rabbit
Reactivity	Human, Rat, Mouse

PRODUCT PROPERTIES

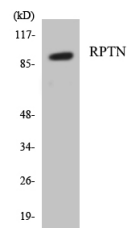
Clonality	Polyclonal
Clone ID	
Concentration	1 mg/mL
Conjugation	Unconjugated
Purification	The antibody was affinity-purified from rabbit anti-serum by affinity-chromatography.
Dilution Range	WB 1:500-1:2000 ELISA 1:5000
Formulation	PBS, 50% Glycerol, 0.5% BSA and 0.02% Sodium Azide.
Isotype	IgG
Storage Instruction	Store at -20°C for up to 1 year from the date of receipt, and avoid repeat freeze-thaw cycles.

TARGET INFORMATION

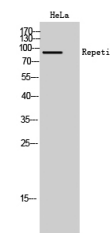
Gene ID	126638
Gene Symbol	RPTN
Uniprot ID	RPTN_HUMAN
Immunogen	The antiserum was produced against synthesized peptide derived from human RPTN at amino acid range 648-697
Immunogen Region	620-700 C-Term
Specificity	RPTN polyclonal antibody (Repetin) binds to endogenous Repetin at the amino acid region 620-700 C-Term.
Immunogen Sequence	



Western blot analysis of RPTN Antibody. The lane on the right is blocked with the RPTN peptide.



Western blot analysis of the lysates from HepG2 cells using RPTN antibody.



Western blot analysis of HeLa cells using Repetin Polyclonal Antibody.

This product is suitable for in-vitro studies under the RESEARCH USE ONLY [RUO] licence. This product must not be used as for diagnostic or other medical purposes.
St John's Laboratory Ltd, Knowledge Dock Business Centre, University Way, London, E16 2RD | Tel: 0208 223 3081