

## Anti-RAPGEF5 antibody (400-480 Internal) (STJ95416)

STJ95416

### GENERAL INFORMATION

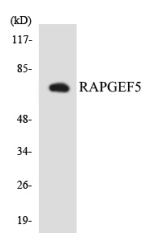
<b>Product Type</b>	Primary antibodies
<b>Short Description</b>	Rabbit polyclonal antibody anti-Rap Guanine Nucleotide Exchange Factor 5 (400-480 Internal) is suitable for use in Western Blot and ELISA research applications.
<b>Applications</b>	WB, ELISA
<b>Host/Source</b>	Rabbit
<b>Reactivity</b>	Human, Mouse, Rat

### PRODUCT PROPERTIES

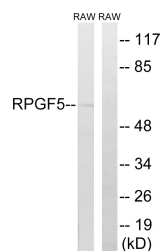
<b>Clonality</b>	Polyclonal
<b>Clone ID</b>	
<b>Concentration</b>	1 mg/mL
<b>Conjugation</b>	Unconjugated
<b>Purification</b>	The antibody was affinity-purified from rabbit anti-serum by affinity-chromatography.
<b>Dilution Range</b>	WB 1:500-1:2000 ELISA 1:20000
<b>Formulation</b>	PBS, 50% Glycerol, 0.5% BSA and 0.02% Sodium Azide.
<b>Isotype</b>	IgG
<b>Storage</b>	Store at -20°C for up to 1 year from the date of receipt, and avoid repeat freeze-thaw cycles.
<b>Instruction</b>	

### TARGET INFORMATION

<b>Gene ID</b>	9771
<b>Gene Symbol</b>	RAPGEF5
<b>Uniprot ID</b>	RPGF5_HUMAN
<b>Immunogen</b>	The antiserum was produced against synthesized peptide derived from human RAPGEF5 at amino acid range 431-480
<b>Immunogen Region</b>	400-480 Internal
<b>Specificity</b>	RAPGEF5 polyclonal antibody (Rap Guanine Nucleotide Exchange Factor 5) binds to endogenous Rap Guanine Nucleotide Exchange Factor 5 at the amino acid region 400-480 Internal.
<b>Immunogen Sequence</b>	



Western blot analysis of the lysates from COLO205 cells using RAPGEF5 antibody.



Western blot analysis of lysates from RAW264.7 cells, using RAPGEF5 Antibody. The lane on the right is blocked with the synthesized peptide.

This product is suitable for in-vitro studies under the RESEARCH USE ONLY [RUO] licence. This product must not be used as for diagnostic or other medical purposes.  
St John's Laboratory Ltd, Knowledge Dock Business Centre, University Way, London, E16 2RD | Tel: 0208 223 3081