

## Anti-CHML antibody (100-180 Internal) (STJ95415)

STJ95415

### GENERAL INFORMATION

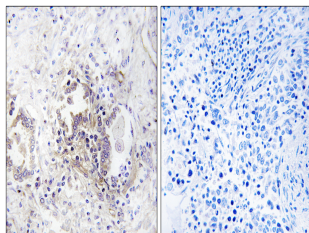
<b>Product Type</b>	Primary antibodies
<b>Short Description</b>	Rabbit polyclonal antibody anti-Rab Proteins Geranylgeranyltransferase Component A 2 (100-180 Internal) is suitable for use in Western Blot, Immunohistochemistry, Immunofluorescence and ELISA research applications.
<b>Applications</b>	WB, IHC-P, IF-P, ELISA
<b>Host/Source</b>	Rabbit
<b>Reactivity</b>	Human, Rat, Mouse

### PRODUCT PROPERTIES

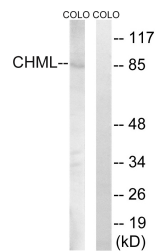
<b>Clonality</b>	Polyclonal
<b>Clone ID</b>	
<b>Concentration</b>	1 mg/mL
<b>Conjugation</b>	Unconjugated
<b>Purification</b>	The antibody was affinity-purified from rabbit anti-serum by affinity-chromatography.
<b>Dilution Range</b>	WB 1:500-1:2000 IHC 1:100-1:300 ELISA 1:5000
<b>Formulation</b>	PBS, 50% Glycerol, 0.5% BSA and 0.02% Sodium Azide.
<b>Isotype</b>	IgG
<b>Storage Instruction</b>	Store at -20°C for up to 1 year from the date of receipt, and avoid repeat freeze-thaw cycles.

### TARGET INFORMATION

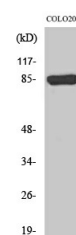
<b>Gene ID</b>	1122
<b>Gene Symbol</b>	CHML
<b>Uniprot ID</b>	RAE2_HUMAN
<b>Immunogen</b>	The antiserum was produced against synthesized peptide derived from human CHML at amino acid range 128-177
<b>Immunogen Region</b>	100-180 Internal
<b>Specificity</b>	CHML polyclonal antibody (Rab Proteins Geranylgeranyltransferase Component A 2) binds to endogenous Rab Proteins Geranylgeranyltransferase Component A 2 at the amino acid region 100-180 Internal.
<b>Immunogen Sequence</b>	



Immunohistochemistry analysis of paraffin-embedded human lung carcinoma tissue, using CHML Antibody. The picture on the right is blocked with the synthesized peptide.



Western blot analysis of lysates from COLO cells, using CHML Antibody. The lane on the right is blocked with the synthesized peptide.



Western blot analysis of various cells using REP-2 Polyclonal Antibody diluted at 1: 1000