

Anti-RELT antibody (350-430 C-Term) (STJ95411)

STJ95411

GENERAL INFORMATION

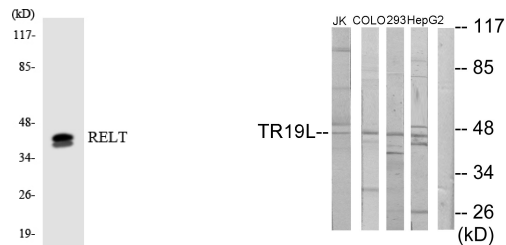
Product Type	Primary antibodies
Short Description	Rabbit polyclonal antibody anti-Tumor Necrosis Factor Receptor Superfamily Member 19I (350-430 C-Term) is suitable for use in Western Blot, Immunohistochemistry, Immunofluorescence, Immunocytochemistry and ELISA research applications.
Applications	WB, IHC-P, IF, ICC, ELISA
Host/Source	Rabbit
Reactivity	Human, Mouse

PRODUCT PROPERTIES

Clonality	Polyclonal
Clone ID	
Concentration	1 mg/mL
Conjugation	Unconjugated
Purification	The antibody was affinity-purified from rabbit anti-serum by affinity-chromatography.
Dilution Range	WB 1:500-1:2000 IHC 1:100-1:300 IF 1:200-1:1000 ELISA 1:40000
Formulation	PBS, 50% Glycerol, 0.5% BSA and 0.02% Sodium Azide.
Isotype	IgG
Storage Instruction	Store at -20°C for up to 1 year from the date of receipt, and avoid repeat freeze-thaw cycles.

TARGET INFORMATION

Gene ID	84957
Gene Symbol	RELT
Uniprot ID	TR19L_HUMAN
Immunogen	The antiserum was produced against synthesized peptide derived from human RELT at amino acid range 381-430
Immunogen Region	350-430 C-Term
Specificity	RELT polyclonal antibody (Tumor Necrosis Factor Receptor Superfamily Member 19I) binds to endogenous Tumor Necrosis Factor Receptor Superfamily Member 19I at the amino acid region 350-430 C-Term.
Immunogen Sequence	



Western blot analysis of the lysates from Jurkat cells using RELT antibody.

Western blot analysis of lysates from Jurkat, COLO205, 293, and HepG2 cells, using RELT Antibody. The lane on the right is blocked with the synthesized peptide.

This product is suitable for in-vitro studies under the RESEARCH USE ONLY [RUO] licence. This product must not be used as for diagnostic or other medical purposes.
St John's Laboratory Ltd, Knowledge Dock Business Centre, University Way, London, E16 2RD | Tel: 0208 223 3081