

Anti-RXFP3 antibody (130-210 Internal) (STJ95408)

STJ95408

GENERAL INFORMATION

Product Type	Primary antibodies
Short Description	Rabbit polyclonal antibody anti-Relaxin-3 Receptor 1 (130-210 Internal) is suitable for use in Western Blot and ELISA research applications.
Applications	WB, ELISA
Host/Source	Rabbit
Reactivity	Human, Mouse, Rat

PRODUCT PROPERTIES

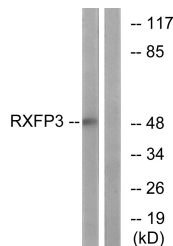
Clonality	Polyclonal
Clone ID	
Concentration	1 mg/mL
Conjugation	Unconjugated
Purification	The antibody was affinity-purified from rabbit anti-serum by affinity-chromatography.
Dilution Range	WB 1:500-1:2000 ELISA 1:10000
Formulation	PBS, 50% Glycerol, 0.5% BSA and 0.02% Sodium Azide.
Isotype	IgG
Storage Instruction	Store at -20°C for up to 1 year from the date of receipt, and avoid repeat freeze-thaw cycles.

TARGET INFORMATION

Gene ID	51289
Gene Symbol	RXFP3
Uniprot ID	RL3R1_HUMAN
Immunogen	The antiserum was produced against synthesized peptide derived from human RXFP3 at amino acid range 161-210
Immunogen Region	130-210 Internal
Specificity	RXFP3 polyclonal antibody (Relaxin-3 Receptor 1) binds to endogenous Relaxin-3 Receptor 1 at the amino acid region 130-210 Internal.
Immunogen Sequence	



Western blot analysis of the lysates from Jurkat cells using RXFP3 antibody.



Western blot analysis of lysates from K562 cells, using RXFP3 Antibody. The lane on the right is blocked with the synthesized peptide.

This product is suitable for in-vitro studies under the RESEARCH USE ONLY [RUO] licence. This product must not be used as for diagnostic or other medical purposes.
St John's Laboratory Ltd, Knowledge Dock Business Centre, University Way, London, E16 2RD | Tel: 0208 223 3081