

Anti-RXFP2 antibody (90-170 Internal) (STJ95407)

STJ95407

GENERAL INFORMATION

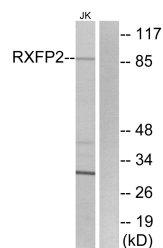
Product Type	Primary antibodies
Short Description	Rabbit polyclonal antibody anti-Relaxin Receptor 2 (90-170 Internal) is suitable for use in Western Blot, Immunofluorescence, Immunocytochemistry and ELISA research applications.
Applications	WB, IF, ICC, ELISA
Host/Source	Rabbit
Reactivity	Human, Mouse, Rat

PRODUCT PROPERTIES

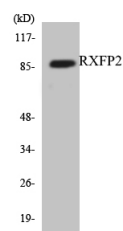
Clonality	Polyclonal
Clone ID	
Concentration	1 mg/mL
Conjugation	Unconjugated
Purification	The antibody was affinity-purified from rabbit anti-serum by affinity-chromatography.
Dilution Range	WB 1:500-1:2000 IF 1:200-1:1000 ELISA 1:10000
Formulation	PBS, 50% Glycerol, 0.5% BSA and 0.02% Sodium Azide.
Isotype	IgG
Storage Instruction	Store at -20°C for up to 1 year from the date of receipt, and avoid repeat freeze-thaw cycles.

TARGET INFORMATION

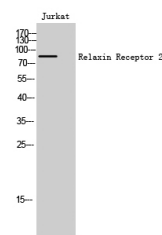
Gene ID	122042
Gene Symbol	RXFP2
Uniprot ID	RXFP2_HUMAN
Immunogen Region	The antiserum was produced against synthesized peptide derived from human RXFP2 at amino acid range 113-162
Immunogen Region	90-170 Internal
Specificity	RXFP2 polyclonal antibody (Relaxin Receptor 2) binds to endogenous Relaxin Receptor 2 at the amino acid region 90-170 Internal.
Immunogen Sequence	



Western blot analysis of lysates from Jurkat cells, using RXFP2 Antibody. The lane on the right is blocked with the synthesized peptide.



Western blot analysis of the lysates from HUVEC cells using RXFP2 antibody.



Western blot analysis of Jurkat cells using Relaxin Receptor 2 Polyclonal Antibody